

This Calendar Item No. 25  
 was approved as Minute Item  
 No. 25 by the State Lands  
 Commission by a vote of 3  
 to 0 at its 12/16/82  
 meeting.

## CALENDAR ITEM

25 4-

12/16/82  
 W 20902  
 Frey

CESSION OF JURISDICTION  
 AT LAVA BEDS NATIONAL MONUMENT,  
 WHISKEYTOWN NATIONAL RECREATION AREA,  
 PT. REYES NATIONAL SEASHORE,  
 PINNACLES NATIONAL MONUMENT

Pursuant to Government Code Section 126, the Commission is authorized on behalf of the State to cede concurrent criminal jurisdiction to the United States upon finding:

- a. That the lands are used for federal purposes.
- b. The United States has in writing requested such cession.
- c. The cession is in compliance with the laws of the United States.

Under a prior cession of jurisdiction in 1977 the National Park Service exercised concurrent criminal jurisdiction over Lava Beds National Monument, Whiskeytown National Recreation Area, Pt. Reyes National Seashore and Pinnacles National Monument. Pursuant to Government Code Section 126 that cession automatically terminated in October 1982. By letter dated September 30, 1982 the National Park Service requests that jurisdiction again be ceded for an additional five years over these same park units.

On October 28, 1982, by Calendar Item 48, the Commission authorized the staff to conduct a public hearing on whether

STATE LANDS COMMISSION  
 1807 13th STREET  
 SACRAMENTO, CA 95814-9990

att: *James R. Frey*  
*Staff Counsel*

THE UNDERSIGNED, ACTING IN THIS BEHALF FOR THE STATE LANDS COMMISSION, HAS HEREBY CERTIFIED, THAT THE ANNEXED IS A WHOLE, TRUE, AND CORRECT COPY OF THE ORIGINAL RECORD COPY, CONSISTING OF 12 PARTS, ON FILE IN THE OFFICE OF THE STATE LANDS COMMISSION, THAT SAID COPY HAS BEEN COMPARED BY THE UNDERSIGNED WITH THE ORIGINAL AND IS A CORRECT TRANSCRIPT THEREFROM.

IN WITNES WHEREOF, THE UNDERSIGNED HAS EXECUTED THIS CERTIFICATE AND AFFIXED THE SEAL OF THE STATE LAND COMMISSION THIS 27 DAY OF Jan A.D. 19 83

*James Frey*  
 -1-

RECORDED AT REQUEST OF

AGENCY SHOWN

1983 JAN 31 PM 12:33

OFFICIAL RECORDS  
 MARIN COUNTY CALIFORNIA  
 W. BRUCE SHAFER

No Fee GC8103

A 1, 9, 24, 29

S 1, 2, 11, 17

CALENDAR PAGE	13
INDEX PAGE	

CALENDAR ITEM NO. 25 (CONTD)

the cession would be in the State's best interests. The hearing was noticed in newspapers of general circulation and the Clerks of the Boards of Supervisors of the affected Counties were served a notice of the hearing. The hearing was held December 3, 1982. No comments regarding the cession were received at the hearing.

The staff believes that cession of concurrent criminal jurisdiction is in the best interests of the State and that it will facilitate the administration of criminal law over the parcels.

AB 884: N/A.

EXHIBITS: A. Location Maps - A, B, C and D.  
B. Land Descriptions - A-1, B-1, C-1, and D-1.

IT IS RECOMMENDED THAT THE COMMISSION:

1. FIND THAT THE FOLLOWING CONDITIONS HAVE BEEN SATISFIED:

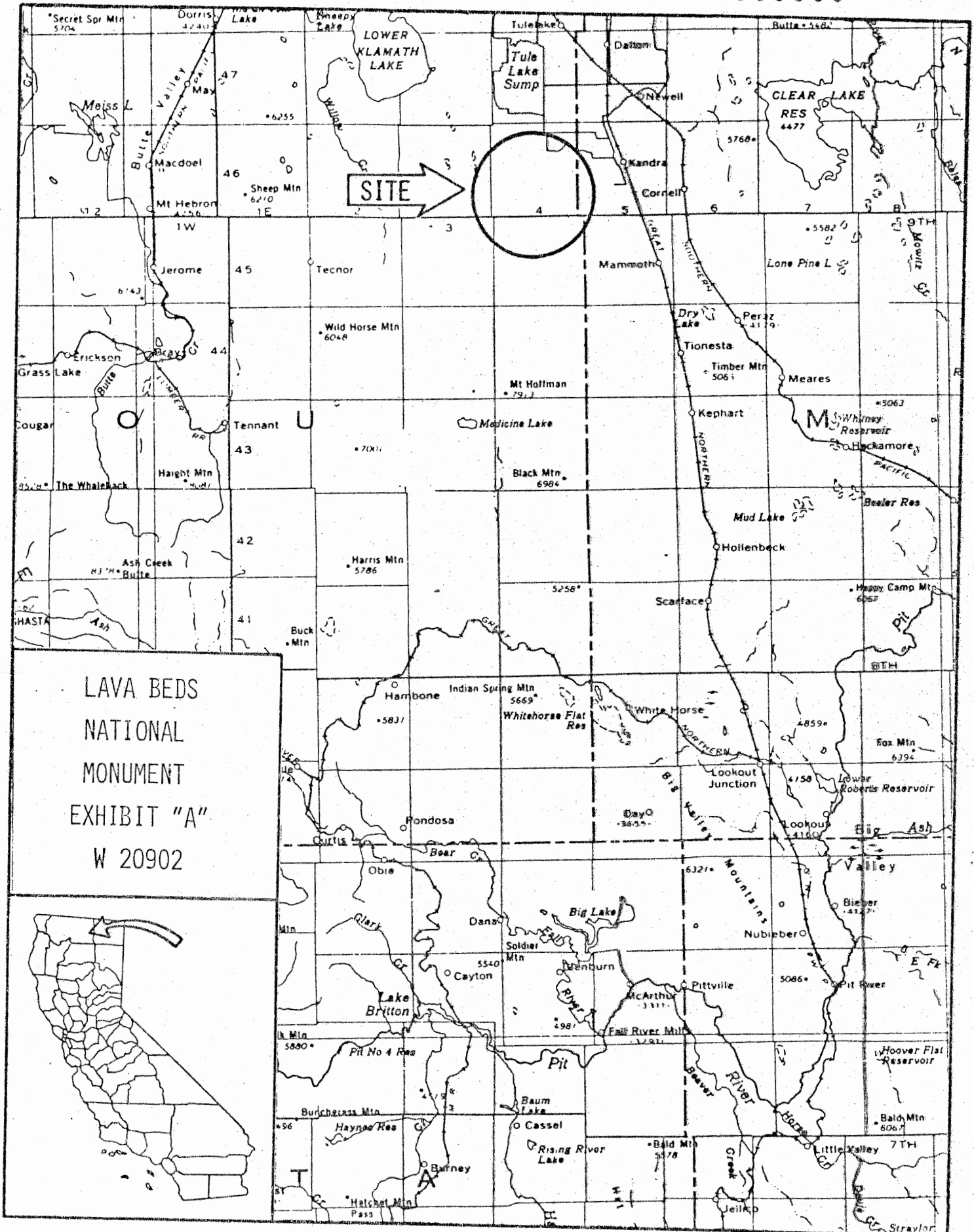
- A. THE UNITED STATES HAS REQUESTED IN WRITING THAT THE STATE OF CALIFORNIA CEDE CONCURRENT CRIMINAL JURISDICTION OVER THE LAND DESCRIBED IN EXHIBITS "A-1", "B-1", "C-1" AND "D-1" ATTACHED AND BY REFERENCE MADE A PART HEREOF, SAID LANDS BEING WITHIN THE STATE OF CALIFORNIA.
- B. THE LAND IS OWNED BY THE UNITED STATES AND USED FOR FEDERAL PURPOSES.
- C. JURISDICTION CEDED PURSUANT TO GOVERNMENT CODE, SECTION 126 CONTINUE ONLY SO LONG AS THE LAND IS HELD BY THE UNITED STATES FOR THE ABOVE-DESCRIBED PURPOSES OR FOR FIVE YEARS, WHICHEVER PERIOD IS LESS.
- D. IN CEDING SUCH CONCURRENT CRIMINAL JURISDICTION THE LEGISLATURE AND THE STATE RESERVE JURISDICTION OVER THE LAND, WATER AND USE OF WATER WITH FULL POWER OR CONTROL AND REGULATE THE ACQUISITION, USE, CONTROL AND DISTRIBUTION OF WATER WITH RESPECT TO THE LAND AFFECTED BY SUCH CESSION.
- E. IN CEDING CONCURRENT CRIMINAL JURISDICTION THE LEGISLATURE AND THE STATE EXCEPT AND RESERVE TO THE STATE ALL DEPOSITS OF MINERALS, INCLUDING OIL

CALENDAR ITEM NO. 25 (CONTD)

AND GAS, IN THE LAND, AND TO THE STATE, OR PERSONS AUTHORIZES BY THE STATE, THE RIGHT TO PROSPECT FOR, MINE, AND REMOVE SUCH DEPOSITS FROM THE LAND.

2. DETERMINE THAT THE CESSION OF JURISDICTION HEARING HELD ON DECEMBER 3, 1982, COMPLIED WITH THE STATUTES AND REGULATIONS FOR THE CESSION OF CONCURRENT CRIMINAL JURISDICTION.
3. DETERMINE THAT A CESSION OF CONCURRENT CRIMINAL JURISDICTION OVER THE LANDS DESCRIBED IN EXHIBITS "A-1", "B-1", "C-1", AND "D-1", ATTACHED AND BY REFERENCE MADE A PART HEREOF IS IN THE BEST INTERESTS OF THE STATE OF CALIFORNIA.
4. CEDE THE REQUESTED CONCURRENT CRIMINAL JURISDICTION OVER THE LANDS IN EXHIBITS "A-1", "B-1", "C-1" AND "D-1". SAID CESSION TO BE EFFECTIVE UPON APPROVAL OF THIS CALENDAR ITEM BY THE COMMISSION, THE RECEIPT OF A LETTER OF ACCEPTANCE OF JURISDICTION BY THE UNITED STATES PURSUANT TO 40 USC 255, AND THE RECORDATION OF ALL NECESSARY DOCUMENTS WITH THE SECRETARY OF STATE AND THE COUNTY RECORDERS.
5. FIND THAT THIS ACTIVITY IS EXEMPT FROM CEQA PURSUANT TO P.R.C. SECTION 21065.

CALENDAR PAGE	95
MINUTE PAGE	



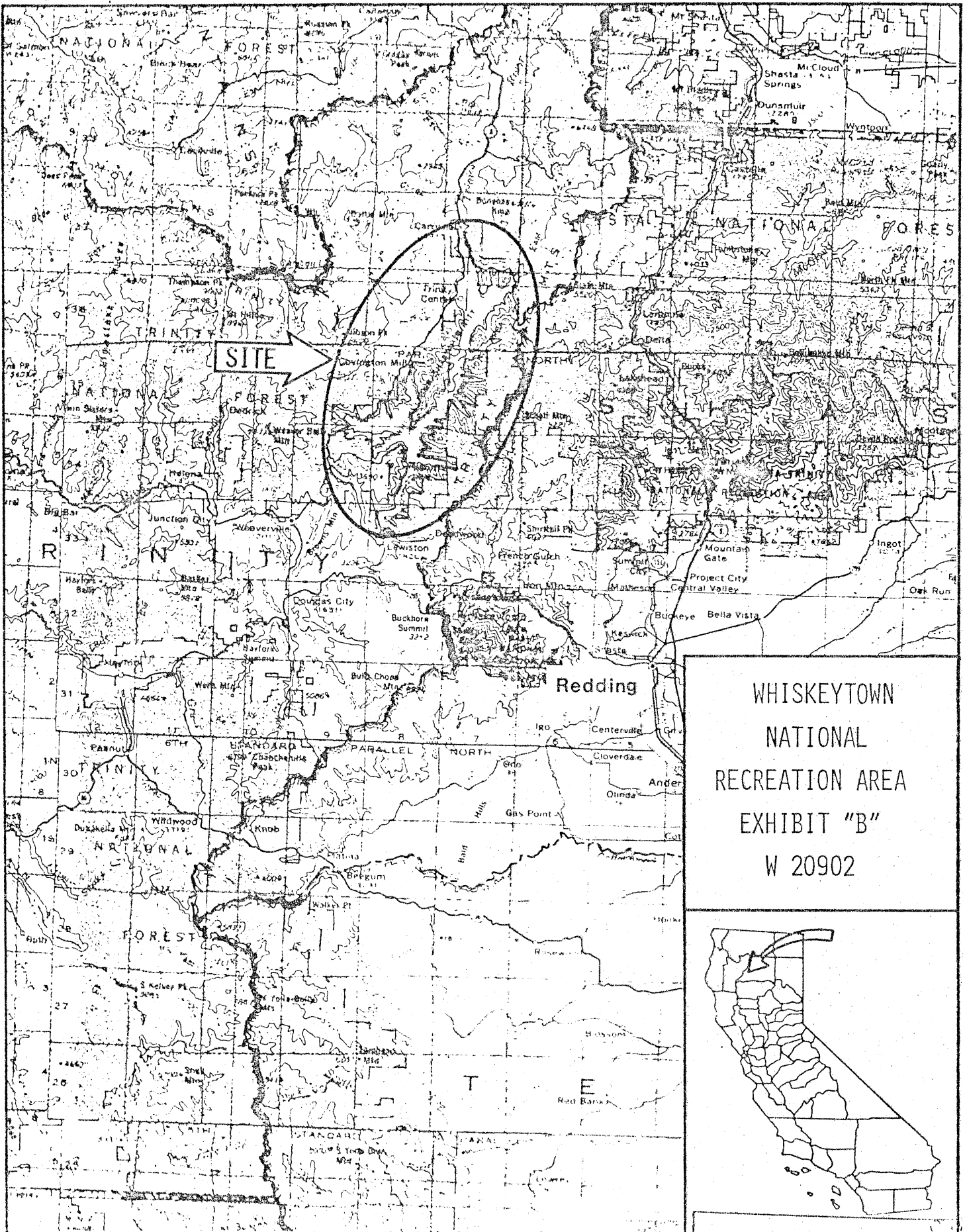
LAVA BEDS  
NATIONAL  
MONUMENT  
EXHIBIT "A"  
W 20902



## EXHIBIT "A-1"

W 20902

All that land known as Lava Beds National Monument located in Siskiyou and Modoc Counties, California, as created by presidential proclamation set forth on November 21, 1925, in United States Statutes at Large, Volume 44, page 2591, and supplemented by the following proclamations: April 27, 1951, No. 2925; Public Law 92-493, 86 Statute 811, October 13, 1972.



WHISKEYTOWN  
NATIONAL  
RECREATION AREA  
EXHIBIT "B"  
W 20902

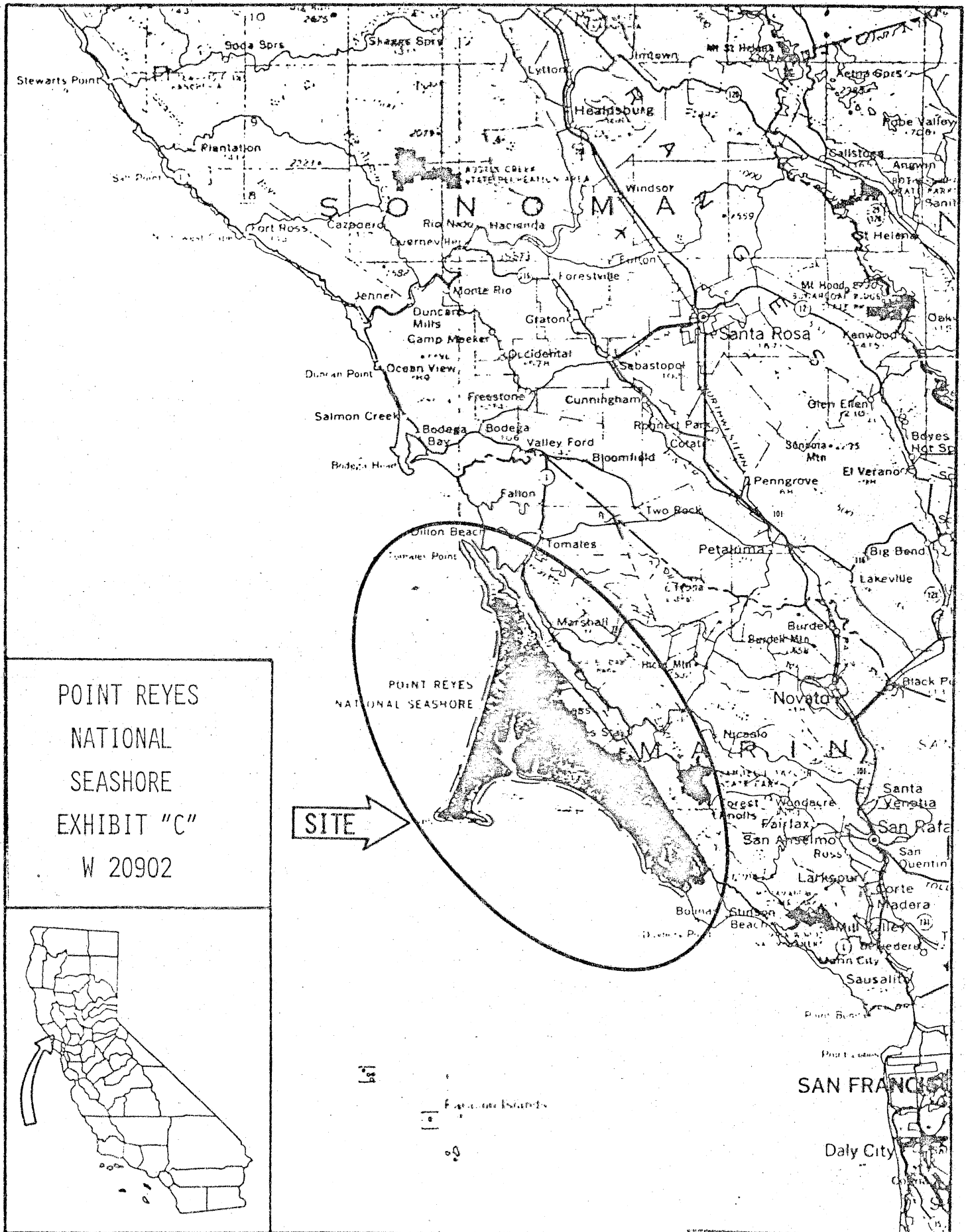


## EXHIBIT "B-1"

W 20902

All that land known as Whiskeytown National Recreation Area located in Shasta County, California, as described in Volume 37, Federal Register No. 212, page 23369.





POINT REYES  
NATIONAL  
SEASHORE  
EXHIBIT "C"  
W 20902

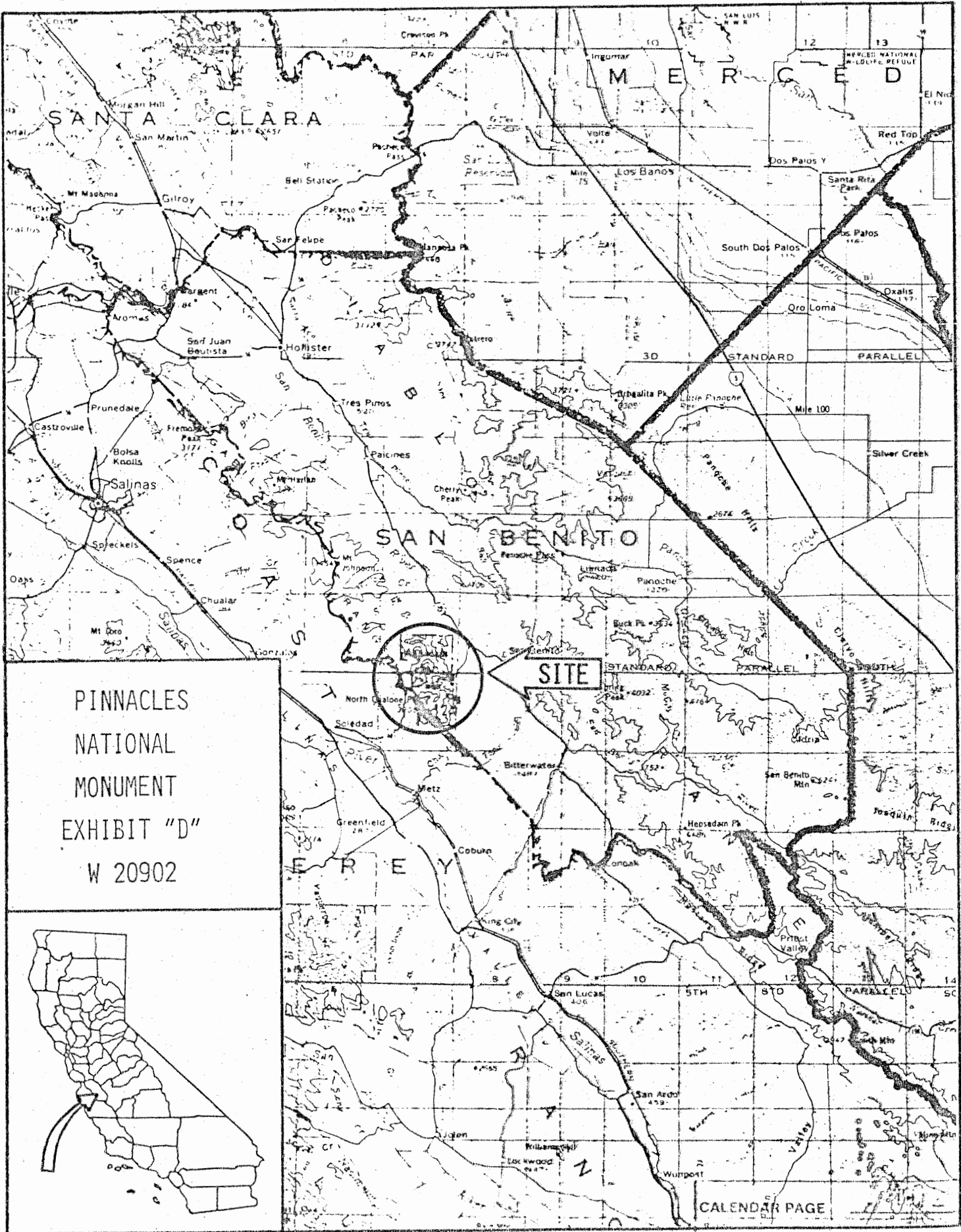


## EXHIBIT "C-1"

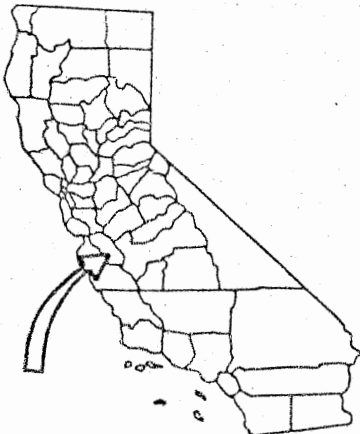
W 20902

All that land known as Point Reyes National Seashore, located in Marin County, California, as described in Volume 37, Federal Register No. 212, page 23366.

To San Jose 10 Miles



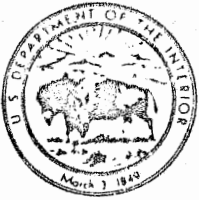
PINNACLES  
NATIONAL  
MONUMENT  
EXHIBIT "D"  
W 20902



## EXHIBIT "D-1"

W 20902

All that land known as Pinnacles National Monument located in San Benito and Monterey Counties, California, as created by presidential proclamation set forth January 16, 1908, in United States Statutes at Large, Vol. 35, page 2177, and supplemented by the following proclamations: May 5, 1923, 43 Statute 1911; July 2, 1924, 43 Statute 1961; April 13, 1931, 47 Statute 2451; July 11, 1933, 48 Statute 1701; December 5, 1941, 55 Statute 1709.



United States Department of the Interior

83005060

NATIONAL PARK SERVICE  
WASHINGTON, D.C. 20240

IN REPLY REFER TO:

(535)

JAN 17 1983

RECEIVED

JAN 21 1983

LANDS COMMISSION

Honorable George Deukmejian  
Governor of California  
State Capitol  
Sacramento, California 95814

Dear Governor Deukmejian:

On December 16, 1982, the California State Lands Commission ceded to the National Park Service concurrent criminal jurisdiction over federally owned lands in Lava Beds National Monument, Pinnacles National Monument, Point Reyes National Seashore and the Whiskeytown Unit of the Whiskeytown-Shasta-Trinity National Recreation Area, for a five year period, as provided for in Section 126 of the California Government Code. As required in 40 U.S.C. §255, the National Park Service hereby accepts the cession of concurrent jurisdiction in the above specified lands.

We appreciate the assistance and cooperation of the State in this regard.

Sincerely,

*Russell E. Dickinson*

Director