

MINUTE ITEM

This Calendar Item No. 25
was approved as Minute Item
No. 25 by the State Lands
Commission by a vote of 3
to 0 at its 12/16/82
meeting.

173016

CALENDAR ITEM

25 1.

VOL 489 PAGE 727

RECORDED AT REQUEST OF State of California
JAN 31 1983 AT 36 MIN: PAST 11A. M
OFFICIAL RECORDS, SAN BENITO COUNTY — JOHN R. HODGES, Recorder
FEE
INDEXED-COMPARED

12/16/82
W 20902
Frey

CESSION OF JURISDICTION
AT LAVA BEDS NATIONAL MONUMENT,
WHISKEYTOWN NATIONAL RECREATION AREA,
PT. REYES NATIONAL SEASHORE,
PINNACLES NATIONAL MONUMENT

Pursuant to Government Code Section 126, the Commission
is authorized on behalf of the State to cede concurrent
criminal jurisdiction to the United States upon finding:

- That the lands are used for federal purposes.
- The United States has in writing requested such cession.
- The cession is in compliance with the laws of the United States.

Under a prior cession of jurisdiction in 1977 the National
Park Service exercised concurrent criminal jurisdiction
over Lava Beds National Monument, Whiskeytown National
Recreation Area, Pt. Reyes National Seashore and Pinnacles
National Monument. Pursuant to Government Code Section
126 that cession automatically terminated in October 1982.
By letter dated September 30, 1982 the National Park Service
requests that jurisdiction again be ceded for an additional
five years over these same park units.

On October 28, 1982, by Calendar Item 48, the Commission
authorized the staff to conduct a public hearing on whether

THE UNDERSIGNED, ACTING IN THIS BEHALF FOR THE
STATE LANDS COMMISSION, HAS HEREBY CERTIFIED,
THAT THE ANNEXED IS A WHOLE, TRUE AND CORRECT
COPY OF THE ORIGINAL RECORD COPY, CONSISTING
OF 12 PARTS, ON FILE IN THE OFFICE OF
THE STATE LANDS COMMISSION; THAT SAID
COPY HAS BEEN COMPARED BY THE UNDER-
SIGNED WITH THE ORIGINAL AND IS A COR-
RECT TRANSCRIPT THEREFROM.

SEAL
AFFIXED

IN WITNESS WHEREOF, THE UNDERSIGNED
HAS EXECUTED THIS CERTIFICATE AND
AFFIXED THE SEAL OF THE STATE LAND
COMMISSION THIS 27 DAY OF Jan.
A.D. 1983

James Frey

A 1, 9, 24, 29

S 1, 2, 11, 17

-1-

CALENDAR PAGE 13
MINUTE PAGE

After Recording Return To:
STATE LANDS COMMISSION
1807 13th Street
Sacramento, CA 95814
Attention: James R. Frey

CALENDAR ITEM NO. 25 (CONT'D)

the cession would be in the State's best interests. The hearing was noticed in newspapers of general circulation and the Clerks of the Boards of Supervisors of the affected Counties were served a notice of the hearing. The hearing was held December 3, 1982. No comments regarding the cession were received at the hearing.

The staff believes that cession of concurrent criminal jurisdiction is in the best interests of the State and that it will facilitate the administration of criminal law over the parcels.

AB 884: N/A.

EXHIBITS: A. Location Maps - A, B, C and D.
B. Land Descriptions - A-1, B-1, C-1, and D-1.

IT IS RECOMMENDED THAT THE COMMISSION:

1. FIND THAT THE FOLLOWING CONDITIONS HAVE BEEN SATISFIED:

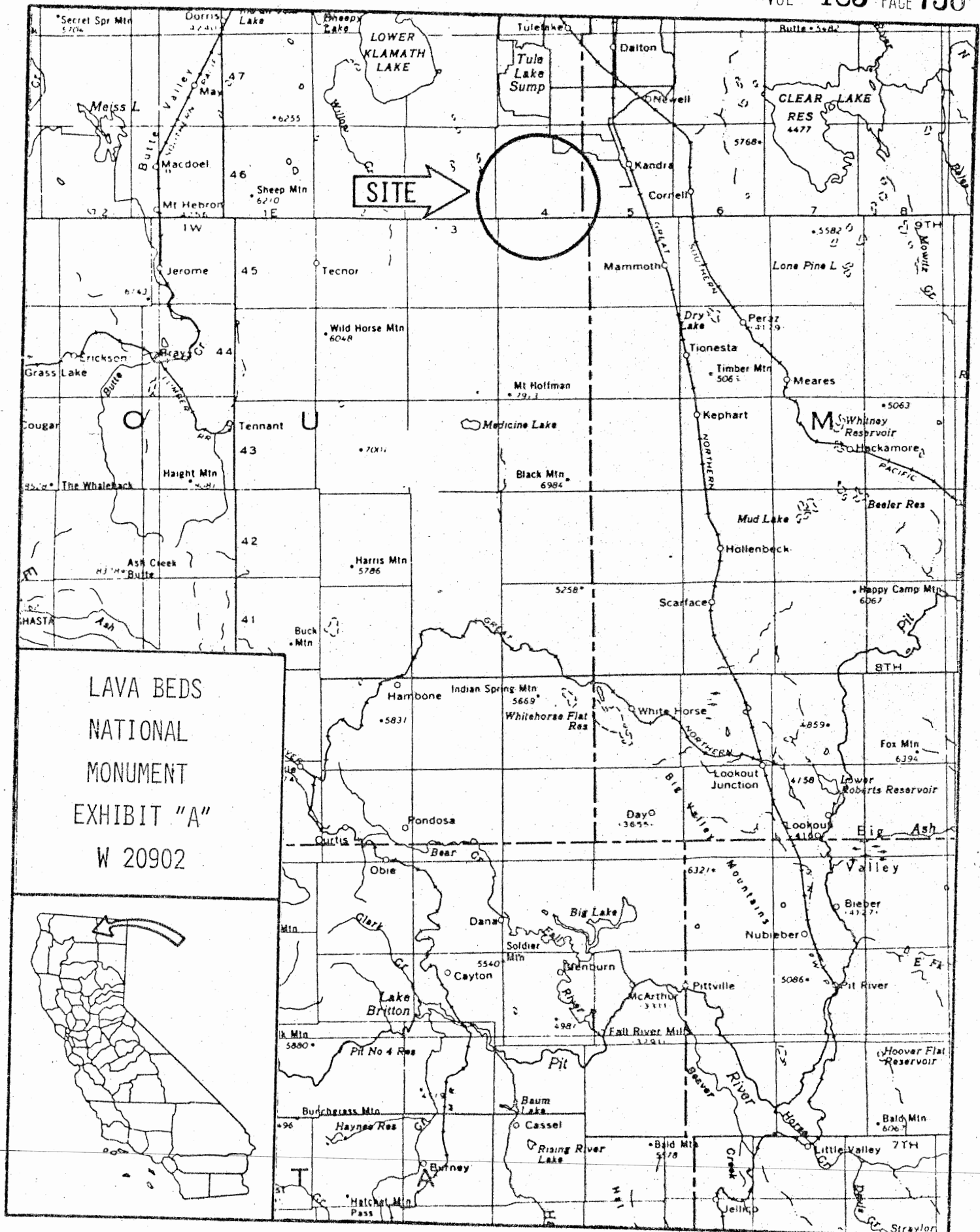
- A. THE UNITED STATES HAS REQUESTED IN WRITING THAT THE STATE OF CALIFORNIA CEDE CONCURRENT CRIMINAL JURISDICTION OVER THE LAND DESCRIBED IN EXHIBITS "A-1", "B-1", "C-1" AND "D-1" ATTACHED AND BY REFERENCE MADE A PART HEREOF, SAID LANDS BEING WITHIN THE STATE OF CALIFORNIA.
- B. THE LAND IS OWNED BY THE UNITED STATES AND USED FOR FEDERAL PURPOSES.
- C. JURISDICTION CEDED PURSUANT TO GOVERNMENT CODE, SECTION 126 CONTINUE ONLY SO LONG AS THE LAND IS HELD BY THE UNITED STATES FOR THE ABOVE-DESCRIBED PURPOSES OR FOR FIVE YEARS, WHICHEVER PERIOD IS LESS.
- D. IN CEDING SUCH CONCURRENT CRIMINAL JURISDICTION THE LEGISLATURE AND THE STATE RESERVE JURISDICTION OVER THE LAND, WATER AND USE OF WATER WITH FULL POWER OR CONTROL AND REGULATE THE ACQUISITION, USE, CONTROL AND DISTRIBUTION OF WATER WITH RESPECT TO THE LAND AFFECTED BY SUCH CESSION.
- E. IN CEDING CONCURRENT CRIMINAL JURISDICTION THE LEGISLATURE AND THE STATE EXCEPT AND RESERVE TO THE STATE ALL DEPOSITS OF MINERALS, INCLUDING OIL

CALENDAR ITEM NO. 25 (CONTD)

AND GAS, IN THE LAND, AND TO THE STATE, OR PERSONS AUTHORIZES BY THE STATE, THE RIGHT TO PROSPECT FOR, MINE, AND REMOVE SUCH DEPOSITS FROM THE LAND.

2. DETERMINE THAT THE CESSION OF JURISDICTION HEARING HELD ON DECEMBER 3, 1982, COMPLIED WITH THE STATUTES AND REGULATIONS FOR THE CESSION OF CONCURRENT CRIMINAL JURISDICTION.
3. DETERMINE THAT A CESSION OF CONCURRENT CRIMINAL JURISDICTION OVER THE LANDS DESCRIBED IN EXHIBITS "A-1", "B-1", "C-1", AND "D-1", ATTACHED AND BY REFERENCE MADE A PART HEREOF IS IN THE BEST INTERESTS OF THE STATE OF CALIFORNIA.
4. CEDE THE REQUESTED CONCURRENT CRIMINAL JURISDICTION OVER THE LANDS IN EXHIBITS "A-1", "B-1", "C-1" AND "D-1". SAID CESSION TO BE EFFECTIVE UPON APPROVAL OF THIS CALENDAR ITEM BY THE COMMISSION, THE RECEIPT OF A LETTER OF ACCEPTANCE OF JURISDICTION BY THE UNITED STATES PURSUANT TO 40 USC 255, AND THE RECORDATION OF ALL NECESSARY DOCUMENTS WITH THE SECRETARY OF STATE AND THE COUNTY RECORDERS.
5. FIND THAT THIS ACTIVITY IS EXEMPT FROM CEQA PURSUANT TO P.R.C. SECTION 21065.

CALENDAR PAGE	95
IMMEDIATE PAGE	

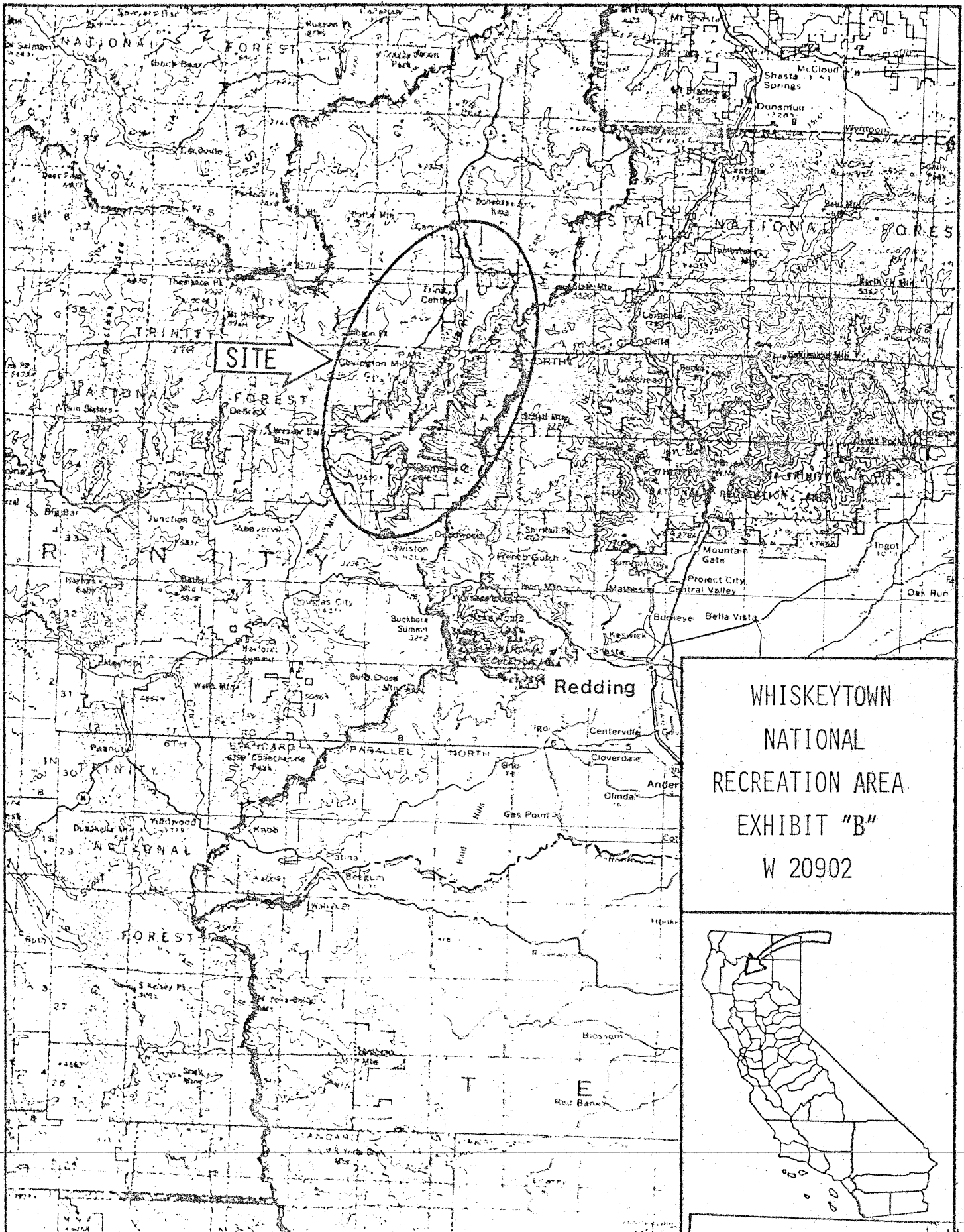


LAVA BEDS
NATIONAL
MONUMENT
EXHIBIT "A"
W 20902

EXHIBIT "A-1"

W 20902

All that land known as Lava Beds National Monument located in Siskiyou and Modoc Counties, California, as created by presidential proclamation set forth on November 21, 1925, in United States Statutes at Large, Volume 44, page 2591, and supplemented by the following proclamations: April 27, 1951, No. 2925; Public Law 92-493, 86 Statute 811, October 13, 1972.



WHISKEYTOWN
NATIONAL
RECREATION AREA
EXHIBIT "B"
W 20902

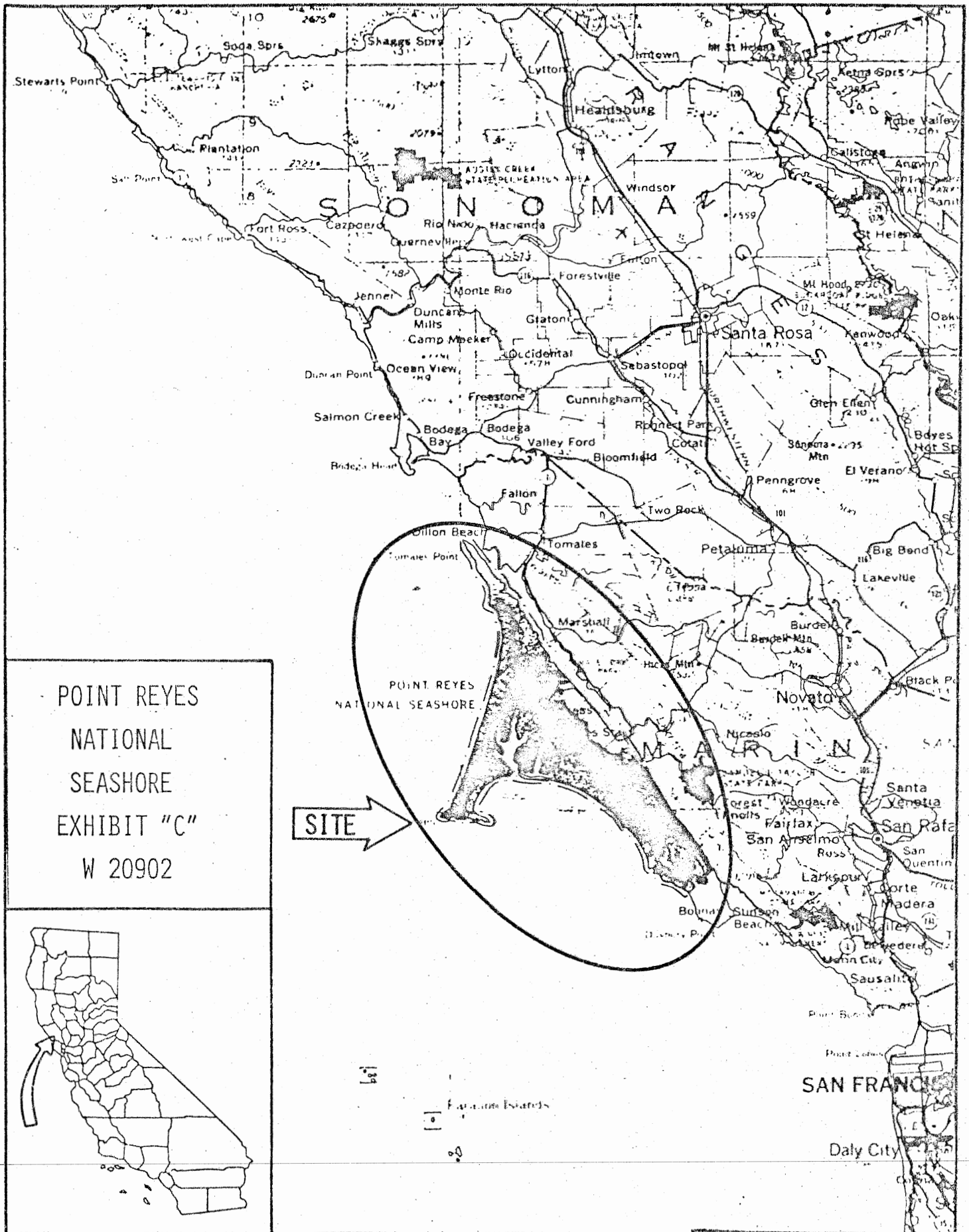
CALENDAR PAGE

MINUTE PAGE

EXHIBIT "B-1"

W 20902

All that land known as Whiskeytown National Recreation Area located in Shasta County, California, as described in Volume 37, Federal Register No. 212, page 23369.



POINT REYES
NATIONAL
SEASHORE
EXHIBIT "C"
W 20902



CALENDAR PAGE

CONTINUE PAGE

EXHIBIT "C-1"

W 20902

All that land known as Point Reyes National Seashore, located in Marin County, California, as described in Volume 37, Federal Register No. 212, page 23366.

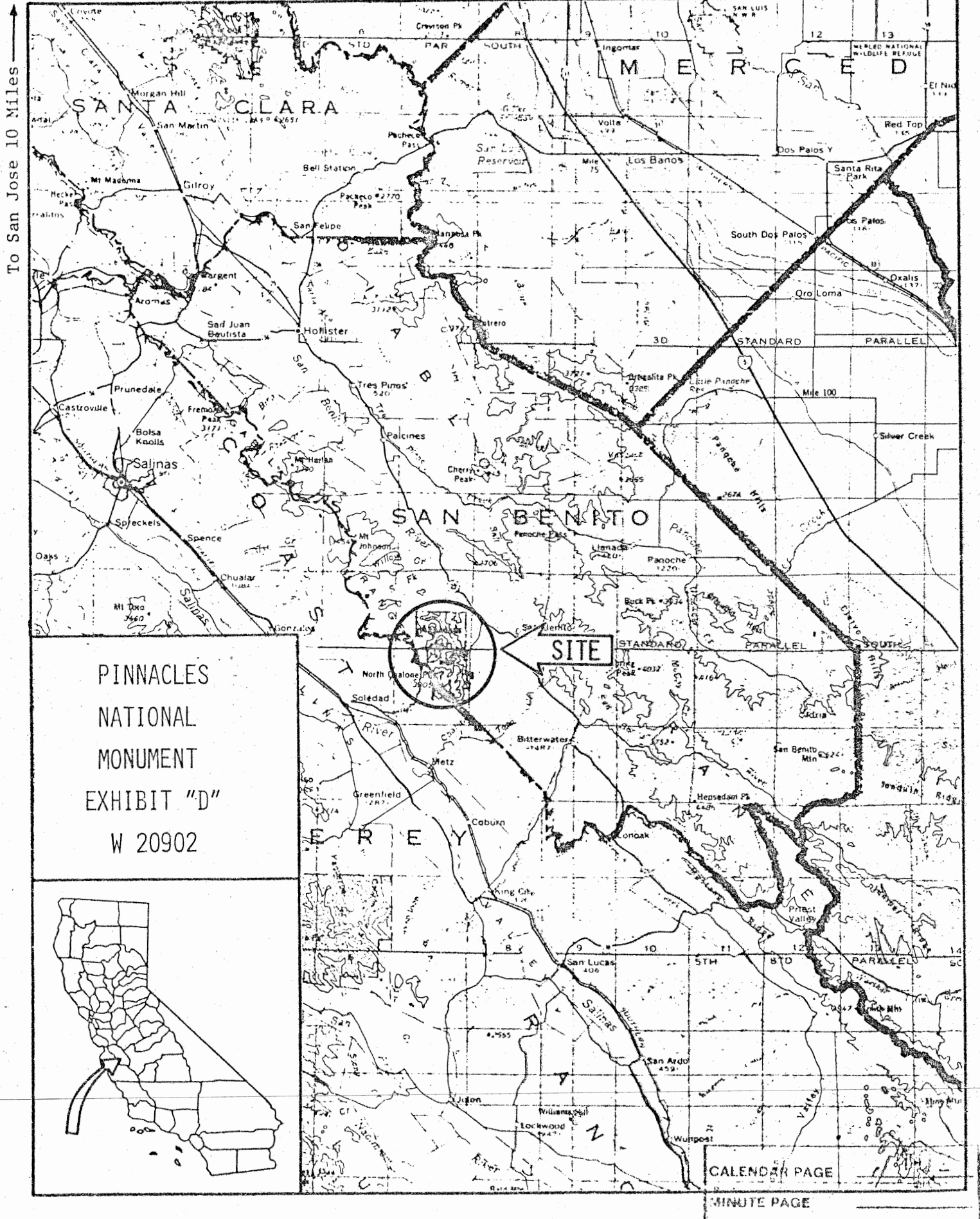


EXHIBIT "D-1"

W 20902

All that land known as Pinnacles National Monument located in San Benito and Monterey Counties, California, as created by presidential proclamation set forth January 16, 1908, in United States Statutes at Large, Vol. 35, page 2177, and supplemented by the following proclamations: May 5, 1923, 43 Statute 1911; July 2, 1924, 43 Statute 1961; April 13, 1931, 47 Statute 2451; July 11, 1933, 48 Statute 1701; December 5, 1941, 55 Statute 1709.



United States Department of the Interior

NATIONAL PARK SERVICE
WASHINGTON, D.C. 20240

IN REPLY REFER TO:

(535)

JAN 17 1983

Honorable George Deukmejian
Governor of California
State Capitol
Sacramento, California 95814

RECEIVED

JAN 21 1983

LANDS COMMISSION

Dear Governor Deukmejian:

On December 16, 1982, the California State Lands Commission ceded to the National Park Service concurrent criminal jurisdiction over federally owned lands in Lava Beds National Monument, Pinnacles National Monument, Point Reyes National Seashore and the Whiskeytown Unit of the Whiskeytown-Shasta-Trinity National Recreation Area, for a five year period, as provided for in Section 126 of the California Government Code. As required in 40 U.S.C. §255, the National Park Service hereby accepts the cession of concurrent jurisdiction in the above specified lands.

We appreciate the assistance and cooperation of the State in this regard.

Sincerely,

Director