

Staff Report 32

LESSEE/APPLICANT:

United States Geological Survey

PROPOSED ACTION:

Amendment of a General Lease – Public Agency Use.

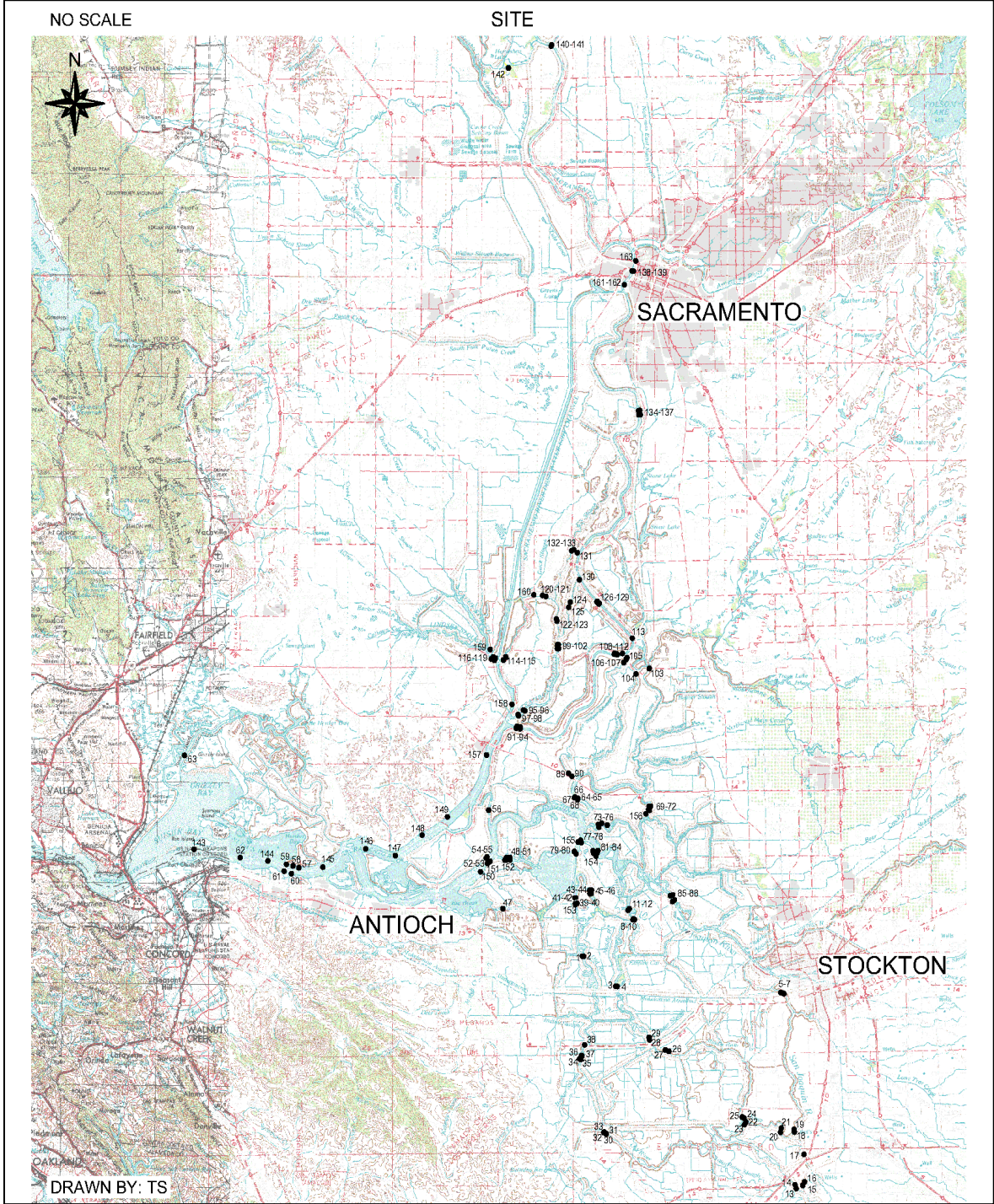
AREA, LAND TYPE, AND LOCATION:

Sovereign land in the Old River, Middle River, San Joaquin River, Holland Cut, False River, South Fork Mokelumne River, North Fork Mokelumne River, Little Potato Slough, Three Mile Slough, Sacramento River, Sutter Slough, Steamboat Slough, Georgiana Slough, Miner Slough, Cache Slough, and Suisun Bay, in Contra Costa, San Joaquin, Sacramento, Yolo, and Solano Counties.

AUTHORIZED USE:

Continued use and maintenance of 60 water monitoring stations and 20 pilings; and continued maintenance of one 2-pile dolphin (as shown in Figure 1, below).

Figure 1. Site Map



NOTE: This depiction of the lease premises is based on unverified information provided by the Applicant or other parties and is not a waiver or limitation of any State interest in the subject or any other property.

TERM:

15 years, beginning October 14, 2014.

CONSIDERATION:

\$140 per year, with an annual Consumer Price Index adjustment as provided for in the lease.

PROPOSED AMENDMENT:

- Authorize the installation and use of 114 additional pilings and monitoring stations; and removal of 7 existing pilings.
- Replace the existing Exhibit A, Land Description, and Exhibit B, Site and Location Map, with a new Exhibit A, Land Description, and Exhibits B-1 and B-2, Site and Location Map (for reference purposes only), in the lease.

All other terms and conditions of the lease shall remain in effect without amendment.

STAFF ANALYSIS AND RECOMMENDATION:

AUTHORITY:

Public Resources Code sections 6005, 6216, 6301, 6501.1, and 6503; California Code of Regulations, title 2, sections 2000 and 2003.

PUBLIC TRUST AND STATE'S BEST INTERESTS:

On October 14, 2014, the Commission authorized issuance of Lease Number PRC 7650 for a General Lease – Public Agency Use for a term of 15 years for the continued use and maintenance of 27 water monitoring stations ([Item 41, October 14, 2014](#)). On October 18, 2018, the Commission authorized a lease amendment for two existing pilings and two additional water monitoring stations ([Item 53, October 18, 2018](#)). On October 21, 2021, the Commission authorized a second lease amendment to install 24 additional pilings and monitoring stations, remove 6 existing pilings, and install 7 monitoring stations on existing United States Coast Guard channel markers ([Item 15, October 21, 2021](#)). On December 5, 2023, the Commission authorized a third lease amendment for an existing 2-pile dolphin and annual rent ([Item 32, December 5, 2023](#)). The lease will expire on October 13, 2029.

The Lessee has operated and maintained a water monitoring network in the Sacramento-San Joaquin Delta since the 1970s. The various sites provide data for water management in the Central Valley. Several federal, state, and local agencies utilize the information. Over successive years, the network has increased to include additional locations to collect water flow, water quality, and fish movement data. To support the monitoring, there is a need for infrastructure maintenance or modification at some existing stations and a need for additional infrastructure at new locations.

The Lessee proposes to install 114 pilings at locations across the Sacramento-San Joaquin Delta, in the Lower Sacramento River, and the lower San Joaquin River to support these monitoring activities. The Applicant will also remove 7 pilings: one from San Joaquin River, one from Sacramento River, two from Old River, and three from Middle River. Implementation of the proposed project is expected to occur over the remaining term of the lease.

The locations of the stations have been identified based on the scientific needs of the monitoring network. The stations will typically consist of an 18-inch-diameter steel piling that will house an electronics box, an aluminum mount with an acoustic doppler velocity meter, several PVC pipes that will house pressure sensors and water quality monitoring devices (known as sondes), solar panels, and navigational safety signage.

The installation of pilings would take less than two days per site and equipment to be used would include a tug and barge mounted crane with a vibratory hammer and a small work boat. The pilings installation and removal will be conducted using Best Management Practices (BMPs) to reduce sediment disturbance and turbidity and limit the risk of debris or contaminants entering the water. Some of the BMPs include working in low water where possible, removing the piling slowly, breaking the friction bond with surrounding sediment before removing, using a containment basin to control spills, and disposing of contained sediments at an appropriate upland disposal site.

This water monitoring network collects important information on water flow, water quality, and fish movement which helps federal, state, and local governments understand changes to the environment and impacts caused by climate change and in turn helps inform future land and resource management practices and policies to protect these important water bodies and the communities that rely on them. The information may also prove useful to the Commission in addressing impacts to Public Trust resources.

Staff therefore believes the proposed amendment of the lease for the proposed installation and removal of pilings will not substantially interfere with the Public Trust needs and values at this location, at this time, and for the term of the lease. The proposed pilings would occupy a small segment of sovereign land and, as a result, would not significantly alter the land.

CLIMATE CHANGE:

Climate change impacts, including sea level rise, more frequent and intense storm events, and increased flooding and erosion, affect both open coastal areas and inland waterways in California. The Project sites are located in various waterways in the Sacramento-San Joaquin Delta.

The California Ocean Protection Council updated the *State of California Sea-Level Rise Guidance* in 2018 to provide a synthesis of the best available science on sea level rise projections and rates. Commission staff evaluated the “high emissions,” “medium-high risk aversion” scenario to apply a conservative approach based on both current emission trajectories and the lease location and structures. The San Francisco tide gauge was used for the projected sea level rise scenario for the region as listed in Table 1.

Table 1. Projected Sea Level Rise for San Francisco

Year	Projection (feet)
2030	0.8
2040	1.3
2050	1.9
2100	6.9

Source: Table 13, [State of California Sea-Level Rise Guidance: 2018 Update](#)

Note: Projections are with respect to a 1991 to 2009 baseline.

This effect could increase river inundation levels within the lease areas. In addition, as stated in the [Safeguarding California Plan: 2018 Update](#) (California Natural Resources Agency 2018), climate change is projected to increase the frequency and severity of natural disasters related to flooding, fire, drought, extreme heat, and storms (especially when coupled with sea level rise). In rivers and tidally influenced waterways, more frequent and powerful storms can result in increased flooding conditions and damage from storm-created debris as well as decreased bank stability and structure. Conversely, climate change induced droughts could decrease river levels and flow for extended periods of time. Climate change and sea level rise will further influence riverine areas by changing erosion and

sedimentation rates. Flooding and storm flow, as well as runoff, will likely increase scour and decrease bank stability at a faster rate.

The new monitoring stations attached to pilings will be fixed and therefore vulnerable to sea level rise and more frequent flood events. These structures may need additional fortification or repair and maintenance to ensure they do not become dislodged or degraded, as they could pose risks to public safety and navigation.

Regular maintenance, as referenced in the lease, may reduce the likelihood of severe structural degradation and dislodgement. Pursuant to the proposed lease, the Applicant acknowledges that the lease premises and adjacent upland are in an area that may be subject to the effects of climate change, including sea level rise.

CONCLUSION:

For all the reasons above, staff believes approval of the proposed amendment of lease is consistent with the common law Public Trust Doctrine and is in the best interests of the State.

OTHER PERTINENT INFORMATION:

1. Approval or denial of the proposed amendment is a discretionary action by the Commission. Each time the Commission approves or rejects a use of sovereign land, it exercises legislatively delegated authority and responsibility as trustee of the State's Public Trust lands as authorized by law. The lessee has no right to a new lease or to renewal of any previous lease.
2. This action is consistent with the "Leading Climate Activism" and "Meeting Evolving Public Trust Needs" Strategic Focus Area of the Commission's 2021-2025 Strategic Plan.
3. **New Pile Installation:** Staff recommends that the Commission find that this activity is exempt from the requirements of the California Environmental Quality Act (CEQA) as a categorically exempt project. The project is exempt under Class 6, Information Collection; California Code of Regulations, title 2, section 2905, subdivision (e)(5).

Pile Removal: Staff recommends that the Commission find that this activity is exempt from the requirements of CEQA as a categorically exempt project. The

project is exempt under Class 4, Minor Alteration to Land; California Code of Regulations, title 2, section 2905, subdivision (d)(3).

Authority: Public Resources Code section 21084 and California Code of Regulations, title 14, section 15300 and California Code of Regulations, title 2, section 2905.

APPROVALS OBTAINED:

- U.S. Army Corps of Engineers
- U.S. Fish and Wildlife Service
- San Francisco Bay Regional Water Quality Control Board
- Central Valley Regional Water Quality Control Board

EXHIBITS:

- A. Land Description
- B. B-1 and B-2 Site and Location Map

RECOMMENDED ACTION:

It is recommended that the Commission:

CEQA FINDING:

Find that this activity is exempt from the requirements of CEQA pursuant to California Code of Regulations, title 14, section 15061 as a categorically exempt project through the combination of the following exemptions: Class 6, Information Collection; California Code of Regulations, title 2, section 2905, subdivision (e)(5), and Class 4, Minor Alteration to Land; California Code of Regulations, title 2, section 2905, subdivision (d)(3).

PUBLIC TRUST AND STATE'S BEST INTERESTS:

Find that the proposed amendment of the lease is consistent with the common law Public Trust Doctrine and is in the best interests of the State.

AUTHORIZATION:

Authorize amendment of the lease, effective April 4, 2024; to allow for the installation and use of 114 additional pilings and monitoring stations; and removal of 7 existing pilings, as described in Exhibit A and shown on Exhibit B-1 and B-2 (for reference purposes) attached and by this reference made a part hereof; all other terms and conditions of the lease will remain in effect without amendment.

EXHIBIT A

LEASE 7650

LAND DESCRIPTION

One hundred sixty three (163) parcels of tide and submerged lands situate in the State of California, and being more particularly described as follows:

Parcel 1 - OBI-RB

A parcel of land in the bed of the Old River in San Joaquin County, said parcel lying immediately beneath existing instruments, cables, buoys, piles, and related appurtenances thereto, and being in the vicinity of NAD83 geographic coordinates Latitude 37.969447° North, Longitude 121.572281° West.

Parcel 2 - OBI-LB

A parcel of land in the bed of the Old River in Contra Costa County, said parcel lying immediately beneath existing instruments, cables, buoys, piles, and related appurtenances thereto, and being in the vicinity of NAD83 geographic coordinates Latitude 37.969668° North, Longitude 121.574022° West.

Parcel 3 - MID-RB

A parcel of land in the bed of the Middle River in San Joaquin County, said parcel lying immediately beneath existing instruments, cables, buoys, piles, and related appurtenances thereto, and being in the vicinity of NAD83 geographic coordinates Latitude 37.942448° North, Longitude 121.532092° West.

Parcel 4 - MID-LB

A parcel of land in the bed of the Middle River in San Joaquin County, said parcel lying immediately beneath existing instruments, cables, buoys, piles, and related appurtenances thereto, and being in the vicinity of NAD83 geographic coordinates Latitude 37.942527° North, Longitude 121.533731° West.

Parcel 5 - SJG

A parcel of land in the bed of the San Joaquin River in San Joaquin County, said parcel lying immediately beneath existing instruments, cables, buoys, piles, and related appurtenances thereto, and being in the vicinity of NAD83 geographic coordinates Latitude 37.935355° North, Longitude 121.331749° West.

Parcel 6 - SJS_1

A parcel of land in the bed of the San Joaquin River in San Joaquin County, said parcel lying immediately beneath proposed instruments, cables, buoys, piles, and related appurtenances thereto, and being in the vicinity of NAD83 geographic coordinates Latitude 37.93509935° North, Longitude 121.3305883° West.

Parcel 7 - SJS_3

A parcel of land in the bed of the San Joaquin River in San Joaquin County, said parcel lying immediately beneath proposed instruments, cables, buoys, piles, and related appurtenances thereto, and being in the vicinity of NAD83 geographic coordinates Latitude 37.93609712° North, Longitude 121.3342413° West.

Parcel 8 - MID_1

A parcel of land in the bed of the Middle River in San Joaquin County, said parcel lying immediately beneath existing instruments, cables, buoys, piles, and related appurtenances thereto, and being in the vicinity of NAD83 geographic coordinates Latitude 38.00180607° North, Longitude 121.5128096° West.

Parcel 9 - MID_2

A parcel of land in the bed of the Middle River in San Joaquin County, said parcel lying immediately beneath proposed instruments, cables, buoys, piles, and related appurtenances thereto, and being in the vicinity of NAD83 geographic coordinates Latitude 38.00181466° North, Longitude 121.510654° West.

Parcel 10 - HLT

A parcel of land in the bed of the Middle River in San Joaquin County, said parcel lying immediately beneath proposed instruments, cables, buoys, piles, and related appurtenances thereto, and being in the vicinity of NAD83 geographic coordinates Latitude 38.002379° North, Longitude 121.512194° West.

Parcel 11 - MID_3

A parcel of land in the bed of the Middle River in San Joaquin County, said parcel lying immediately beneath proposed instruments, cables, buoys, piles, and related appurtenances thereto, and being in the vicinity of NAD83 geographic coordinates Latitude 38.01036226° North, Longitude 121.5186027° West.

Parcel 12 - MID_4

A parcel of land in the bed of the Middle River in San Joaquin County, said parcel lying immediately beneath proposed instruments, cables, buoys, piles, and

related appurtenances thereto, and being in the vicinity of NAD83 geographic coordinates Latitude 38.01158549° North, Longitude 121.5167984° West.

Parcel 13 - PC_

A parcel of land in the bed of the Paradise Cut in San Joaquin County, said parcel lying immediately beneath proposed instruments, cables, buoys, piles, and related appurtenances thereto, and being in the vicinity of NAD83 geographic coordinates Latitude 37.76149104° North, Longitude 121.3173288° West.

Parcel 14 - PC_2

A parcel of land in the bed of the Paradise Cut in San Joaquin County, said parcel lying immediately beneath proposed instruments, cables, buoys, piles, and related appurtenances thereto, and being in the vicinity of NAD83 geographic coordinates Latitude 37.76469788° North, Longitude 121.318818° West.

Parcel 15 - SBP_1

A parcel of land in the bed of the San Joaquin River in San Joaquin County, said parcel lying immediately beneath proposed instruments, cables, buoys, piles, and related appurtenances thereto, and being in the vicinity of NAD83 geographic coordinates Latitude 37.76422894° North, Longitude 121.3093772° West.

Parcel 16 - SBP_3

A parcel of land in the bed of the San Joaquin River in San Joaquin County, said parcel lying immediately beneath proposed instruments, cables, buoys, piles, and related appurtenances thereto, and being in the vicinity of NAD83 geographic coordinates Latitude 37.7673356° North, Longitude 121.3074183° West.

Parcel 17 - MOS_Piling

A parcel of land in the bed of the San Joaquin River in San Joaquin County, said parcel lying immediately beneath proposed instruments, cables, buoys, piles, and related appurtenances thereto, and being in the vicinity of NAD83 geographic coordinates Latitude 37.79170246° North, Longitude 121.3077733° West.

Parcel 18 - SJL_1

A parcel of land in the bed of the San Joaquin River in San Joaquin County, said parcel lying immediately beneath proposed instruments, cables, buoys, piles, and related appurtenances thereto, and being in the vicinity of NAD83 geographic coordinates Latitude 37.81169679° North, Longitude 121.3190129° West.

Parcel 19 - SJL_3

A parcel of land in the bed of the San Joaquin River in San Joaquin County, said parcel lying immediately beneath proposed instruments, cables, buoys, piles, and related appurtenances thereto, and being in the vicinity of NAD83 geographic coordinates Latitude 37.81384736° North, Longitude 121.3194079° West.

Parcel 20 - ORE_1

A parcel of land in the bed of the Old River in San Joaquin County, said parcel lying immediately beneath proposed instruments, cables, buoys, piles, and related appurtenances thereto, and being in the vicinity of NAD83 geographic coordinates Latitude 37.81167793° North, Longitude 121.3358253° West.

Parcel 21 - ORE_3

A parcel of land in the bed of the Old River in San Joaquin County, said parcel lying immediately beneath proposed instruments, cables, buoys, piles, and related appurtenances thereto, and being in the vicinity of NAD83 geographic coordinates Latitude 37.815101° North, Longitude 121.3347919° West.

Parcel 22 - OBM_1

A parcel of land in the bed of the Old River in San Joaquin County, said parcel lying immediately beneath proposed instruments, cables, buoys, piles, and related appurtenances thereto, and being in the vicinity of NAD83 geographic coordinates Latitude 37.82086178° North, Longitude 121.3774457° West.

Parcel 23 - OBM_3

A parcel of land in the bed of the Old River in San Joaquin County, said parcel lying immediately beneath proposed instruments, cables, buoys, piles, and related appurtenances thereto, and being in the vicinity of NAD83 geographic coordinates Latitude 37.81864705° North, Longitude 121.3793272° West.

Parcel 24 - MRE_1

A parcel of land in the bed of the Middle River in San Joaquin County, said parcel lying immediately beneath proposed instruments, cables, buoys, piles, and related appurtenances thereto, and being in the vicinity of NAD83 geographic coordinates Latitude 37.8245463° North, Longitude 121.3794165° West.

Parcel 25 - MRE_2

A parcel of land in the bed of the Middle River in San Joaquin County, said parcel lying immediately beneath proposed instruments, cables, buoys, piles, and

related appurtenances thereto, and being in the vicinity of NAD83 geographic coordinates Latitude 37.82546042° North, Longitude 121.3820617° West.

Parcel 26 - MRU_1

A parcel of land in the bed of the Middle River in San Joaquin County, said parcel lying immediately beneath proposed instruments, cables, buoys, piles, and related appurtenances thereto, and being in the vicinity of NAD83 geographic coordinates Latitude 37.88445206° North, Longitude 121.4698818° West.

Parcel 27 - MRU_4

A parcel of land in the bed of the Middle River in San Joaquin County, said parcel lying immediately beneath proposed instruments, cables, buoys, piles, and related appurtenances thereto, and being in the vicinity of NAD83 geographic coordinates Latitude 37.88556332° North, Longitude 121.4742502° West.

Parcel 28 - MRV_1

A parcel of land in the bed of the Middle River in San Joaquin County, said parcel lying immediately beneath proposed instruments, cables, buoys, piles, and related appurtenances thereto, and being in the vicinity of NAD83 geographic coordinates Latitude 37.89479425° North, Longitude 121.4932547° West.

Parcel 29 - MRV_3

A parcel of land in the bed of the Middle River in San Joaquin County, said parcel lying immediately beneath proposed instruments, cables, buoys, piles, and related appurtenances thereto, and being in the vicinity of NAD83 geographic coordinates Latitude 37.89668796° North, Longitude 121.4937224° West.

Parcel 30 - OLT_1

A parcel of land in the bed of the Old River in San Joaquin County, said parcel lying immediately beneath proposed instruments, cables, buoys, piles, and related appurtenances thereto, and being in the vicinity of NAD83 geographic coordinates Latitude 37.81087292° North, Longitude 121.546242° West.

Parcel 31 - OLT_2

A parcel of land in the bed of the Old River in San Joaquin County, said parcel lying immediately beneath proposed instruments, cables, buoys, piles, and related appurtenances thereto, and being in the vicinity of NAD83 geographic coordinates Latitude 37.81137779° North, Longitude 121.5459666° West.

Parcel 32 - OLT_3

A parcel of land in the bed of the Old River in San Joaquin County, said parcel lying immediately beneath proposed instruments, cables, buoys, piles, and related appurtenances thereto, and being in the vicinity of NAD83 geographic coordinates Latitude 37.81251045° North, Longitude 121.5489521° West.

Parcel 33 - OLT_4

A parcel of land in the bed of the Old River in San Joaquin County, said parcel lying immediately beneath proposed instruments, cables, buoys, piles, and related appurtenances thereto, and being in the vicinity of NAD83 geographic coordinates Latitude 37.81278116° North, Longitude 121.5485639° West.

Parcel 34 - ORV_1

A parcel of land in the bed of the Old River in San Joaquin County, said parcel lying immediately beneath proposed instruments, cables, buoys, piles, and related appurtenances thereto, and being in the vicinity of NAD83 geographic coordinates Latitude 37.87812046° North, Longitude 121.5775509° West.

Parcel 35 - ORV_2

A parcel of land in the bed of the Old River in San Joaquin County, said parcel lying immediately beneath proposed instruments, cables, buoys, piles, and related appurtenances thereto, and being in the vicinity of NAD83 geographic coordinates Latitude 37.87770996° North, Longitude 121.576449° West.

Parcel 36 - ORV_3

A parcel of land in the bed of the Old River in San Joaquin County, said parcel lying immediately beneath proposed instruments, cables, buoys, piles, and related appurtenances thereto, and being in the vicinity of NAD83 geographic coordinates Latitude 37.88106559° North, Longitude 121.5756442° West.

Parcel 37 - ORV_4

A parcel of land in the bed of the Old River in San Joaquin County, said parcel lying immediately beneath proposed instruments, cables, buoys, piles, and related appurtenances thereto, and being in the vicinity of NAD83 geographic coordinates Latitude 37.88080645° North, Longitude 121.5747567° West.

Parcel 38 - OH4

A parcel of land in the bed of the Old River in San Joaquin County, said parcel lying immediately beneath proposed instruments, cables, buoys, piles, and

related appurtenances thereto, and being in the vicinity of NAD83 geographic coordinates Latitude 37.890669° North, Longitude 121.571736° West.

Parcel 39 - HC_1

A parcel of land in the bed of the Holland Cut in Contra Costa County, said parcel lying immediately beneath proposed instruments, cables, buoys, piles, and related appurtenances thereto, and being in the vicinity of NAD83 geographic coordinates Latitude 38.01643374° North, Longitude 121.5821207° West.

Parcel 40 - HC_2

A parcel of land in the bed of the Holland Cut in Contra Costa County, said parcel lying immediately beneath proposed instruments, cables, buoys, piles, and related appurtenances thereto, and being in the vicinity of NAD83 geographic coordinates Latitude 38.01647623° North, Longitude 121.58022° West.

Parcel 41 - HC_3

A parcel of land in the bed of the Holland Cut in Contra Costa County, said parcel lying immediately beneath proposed instruments, cables, buoys, piles, and related appurtenances thereto, and being in the vicinity of NAD83 geographic coordinates Latitude 38.02166585° North, Longitude 121.5830126° West.

Parcel 42 - HC_4

A parcel of land in the bed of the Holland Cut in Contra Costa County, said parcel lying immediately beneath proposed instruments, cables, buoys, piles, and related appurtenances thereto, and being in the vicinity of NAD83 geographic coordinates Latitude 38.0218105° North, Longitude 121.5809259° West.

Parcel 43 - ORQ_1

A parcel of land in the bed of the Old River in Contra Costa County said parcel lying immediately beneath proposed instruments, cables, buoys, piles, and related appurtenances thereto, and being in the vicinity of NAD83 geographic coordinates Latitude 38.02517867° North, Longitude 121.566543° West.

Parcel 44 - ORQ_3

A parcel of land in the bed of the Old River in Contra Costa County, said parcel lying immediately beneath proposed instruments, cables, buoys, piles, and related appurtenances thereto, and being in the vicinity of NAD83 geographic coordinates Latitude 38.02816087° North, Longitude 121.5647391° West.

Parcel 45 - ORQ_2

A parcel of land in the bed of the Old River in San Joaquin County said parcel lying immediately beneath proposed instruments, cables, buoys, piles, and related appurtenances thereto, and being in the vicinity of NAD83 geographic coordinates Latitude 38.02528583° North, Longitude 121.5627355° West.

Parcel 46 - ORQ_4

A parcel of land in the bed of the Old River in San Joaquin County, said parcel lying immediately beneath proposed instruments, cables, buoys, piles, and related appurtenances thereto, and being in the vicinity of NAD83 geographic coordinates Latitude 38.02814894° North, Longitude 121.5625775° West.

Parcel 47 - DSJ

A parcel of land in the bed of the Dutch Slough in Contra Costa County, said parcel lying immediately beneath existing instruments, cables, buoys, piles, and related appurtenances thereto, and being in the vicinity of NAD83 geographic coordinates Latitude 38.012244° North, Longitude 121.670009° West.

Parcel 48 - FAL_1

A parcel of land in the bed of the False River in Contra Costa County, said parcel lying immediately beneath proposed instruments, cables, buoys, piles, and related appurtenances thereto, and being in the vicinity of NAD83 geographic coordinates Latitude 38.05553432° North, Longitude 121.6610101° West.

Parcel 49 - FAL_2

A parcel of land in the bed of the False River in Contra Costa County, said parcel lying immediately beneath proposed instruments, cables, buoys, piles, and related appurtenances thereto, and being in the vicinity of NAD83 geographic coordinates Latitude 38.05781647° North, Longitude 121.6613719° West.

Parcel 50 - FAL_3

A parcel of land in the bed of the False River in Contra Costa County, said parcel lying immediately beneath proposed instruments, cables, buoys, piles, and related appurtenances thereto, and being in the vicinity of NAD83 geographic coordinates Latitude 38.05534106° North, Longitude 121.6655756° West.

Parcel 51 - FAL_4

A parcel of land in the bed of the False River in Contra Costa County, said parcel lying immediately beneath proposed instruments, cables, buoys, piles, and

related appurtenances thereto, and being in the vicinity of NAD83 geographic coordinates Latitude 38.05742195° North, Longitude 121.6654254° West.

Parcel 52 - JP_1

A parcel of land in the bed of the San Joaquin River in Contra Costa County, said parcel lying immediately beneath proposed instruments, cables, buoys, piles, and related appurtenances thereto, and being in the vicinity of NAD83 geographic coordinates Latitude 38.05451481° North, Longitude 121.6852497° West.

Parcel 53 - JP_5

A parcel of land in the bed of the San Joaquin River in Contra Costa County, said parcel lying immediately beneath proposed instruments, cables, buoys, piles, and related appurtenances thereto, and being in the vicinity of NAD83 geographic coordinates Latitude 38.05355606° North, Longitude 121.6867646° West.

Parcel 54 - JP_4

A parcel of land in the bed of the San Joaquin River in Sacramento County, said parcel lying immediately beneath proposed instruments, cables, buoys, piles, and related appurtenances thereto, and being in the vicinity of NAD83 geographic coordinates Latitude 38.05828954° North, Longitude 121.6889122° West.

Parcel 55 - JP_8

A parcel of land in the bed of the San Joaquin River in Sacramento County, said parcel lying immediately beneath proposed instruments, cables, buoys, piles, and related appurtenances thereto, and being in the vicinity of NAD83 geographic coordinates Latitude 38.05740624° North, Longitude 121.6900052° West.

Parcel 56 - TSL

A parcel of land in the bed of the Three Mile Slough in Sacramento County, said parcel lying immediately beneath existing instruments, cables, buoys, piles, and related appurtenances thereto, and being in the vicinity of NAD83 geographic coordinates Latitude 38.099907° North, Longitude 121.686645° West.

Parcel 57 - ADVN_ConflNorth

A parcel of land in the bed of the Suisun Bay in Solano County, said parcel lying immediately beneath existing instruments, cables, buoys, piles, and related appurtenances thereto, and being in the vicinity of NAD83 geographic coordinates Latitude 38.048927° North, Longitude 121.916708° West.

Parcel 58 - CHPS_6

A parcel of land in the bed of the Suisun Bay in Solano County, said parcel lying immediately beneath proposed instruments, cables, buoys, piles, and related appurtenances thereto, and being in the vicinity of NAD83 geographic coordinates Latitude 38.05071596° North, Longitude 121.923813° West.

Parcel 59 - CHPS_12

A parcel of land in the bed of the Suisun Bay in Solano County, said parcel lying immediately beneath proposed instruments, cables, buoys, piles, and related appurtenances thereto, and being in the vicinity of NAD83 geographic coordinates Latitude 38.05210254° North, Longitude 121.931777° West.

Parcel 60 - CHPS_1

A parcel of land in the bed of the Suisun Bay in Contra Costa County, said parcel lying immediately beneath proposed instruments, cables, buoys, piles, and related appurtenances thereto, and being in the vicinity of NAD83 geographic coordinates Latitude 38.04373112° North, Longitude 121.9257088° West.

Parcel 61 - CHPS_7

A parcel of land in the bed of the Suisun Bay in Contra Costa County, said parcel lying immediately beneath proposed instruments, cables, buoys, piles, and related appurtenances thereto, and being in the vicinity of NAD83 geographic coordinates Latitude 38.04594157° North, Longitude 121.934539° West.

Parcel 62 - CM 20

A parcel of land in the bed of the Suisun Bay in Solano County, said parcel lying immediately beneath proposed instruments, cables, buoys, piles, and related appurtenances thereto, and being in the vicinity of NAD83 geographic coordinates Latitude 38.058036° North, Longitude 121.98767° West.

Parcel 63 - MTZw

A parcel of land in the bed of the Montezuma Slough in Solano County, said parcel lying immediately beneath proposed instruments, cables, buoys, piles, and related appurtenances thereto, and being in the vicinity of NAD83 geographic coordinates Latitude 38.149207° North, Longitude 121.05526° West.

Parcel 64 - MOK

A parcel of land in the bed of the Mokelumne River in San Joaquin County, said parcel lying immediately beneath existing instruments, cables, buoys, piles, and

related appurtenances thereto, and being in the vicinity of NAD83 geographic coordinates Latitude 38.109939° North, Longitude 121.578963° West.

Parcel 65 - MOK_3

A parcel of land in the bed of the Mokelumne River in San Joaquin County, said parcel lying immediately beneath proposed instruments, cables, buoys, piles, and related appurtenances thereto, and being in the vicinity of NAD83 geographic coordinates Latitude 38.10993086° North, Longitude 121.5785047° West.

Parcel 66 - MOK_1

A parcel of land in the bed of the Mokelumne River in San Joaquin County, said parcel lying immediately beneath proposed instruments, cables, buoys, piles, and related appurtenances thereto, and being in the vicinity of NAD83 geographic coordinates Latitude 38.1113652° North, Longitude 121.5820513° West.

Parcel 67 - MOK_2

A parcel of land in the bed of the Mokelumne River in Sacramento County, said parcel lying immediately beneath proposed instruments, cables, buoys, piles, and related appurtenances thereto, and being in the vicinity of NAD83 geographic coordinates Latitude 38.11079421° North, Longitude 121.5827433° West.

Parcel 68 - MOK_4

A parcel of land in the bed of the Mokelumne River in Sacramento County, said parcel lying immediately beneath proposed instruments, cables, buoys, piles, and related appurtenances thereto, and being in the vicinity of NAD83 geographic coordinates Latitude 38.10906331° North, Longitude 121.5788415° West.

Parcel 69 - LPS_1

A parcel of land in the bed of the Little Potatoe Slough in San Joaquin County, said parcel lying immediately beneath proposed instruments, cables, buoys, piles, and related appurtenances thereto, and being in the vicinity of NAD83 geographic coordinates Latitude 38.10276489° North, Longitude 121.4905136° West.

Parcel 70 - LPS_2

A parcel of land in the bed of the Little Potatoe Slough in San Joaquin County, said parcel lying immediately beneath proposed instruments, cables, buoys, piles, and related appurtenances thereto, and being in the vicinity of NAD83 geographic coordinates Latitude 38.10284781° North, Longitude 121.492195° West.

Parcel 71 - LPS_3

A parcel of land in the bed of the Little Potatoe Slough in San Joaquin County, said parcel lying immediately beneath proposed instruments, cables, buoys, piles, and related appurtenances thereto, and being in the vicinity of NAD83 geographic coordinates Latitude 38.09990881° North, Longitude 121.4930914° West.

Parcel 72 - LPS_4

A parcel of land in the bed of the Little Potatoe Slough in San Joaquin County, said parcel lying immediately beneath proposed instruments, cables, buoys, piles, and related appurtenances thereto, and being in the vicinity of NAD83 geographic coordinates Latitude 38.09912840° North, Longitude 121.4918742° West.

Parcel 73 - PS_1

A parcel of land in the bed of the Potato Slough in San Joaquin County, said parcel lying immediately beneath proposed instruments, cables, buoys, piles, and related appurtenances thereto, and being in the vicinity of NAD83 geographic coordinates Latitude 38.08604267° North, Longitude 121.5483322° West.

Parcel 74 - PS_2

A parcel of land in the bed of the Potato Slough in San Joaquin County, said parcel lying immediately beneath proposed instruments, cables, buoys, piles, and related appurtenances thereto, and being in the vicinity of NAD83 geographic coordinates Latitude 38.08790107° North, Longitude 121.5496178° West.

Parcel 75 - PS_3

A parcel of land in the bed of the Potato Slough in San Joaquin County, said parcel lying immediately beneath proposed instruments, cables, buoys, piles, and related appurtenances thereto, and being in the vicinity of NAD83 geographic coordinates Latitude 38.08427751° North, Longitude 121.5530993° West.

Parcel 76 - PS_4

A parcel of land in the bed of the Potato Slough in San Joaquin County, said parcel lying immediately beneath proposed instruments, cables, buoys, piles, and related appurtenances thereto, and being in the vicinity of NAD83 geographic coordinates Latitude 38.08688132° North, Longitude 121.5538078° West.

Parcel 77 - ORFT_1

A parcel of land in the bed of the Old River in San Joaquin County, said parcel lying immediately beneath proposed instruments, cables, buoys, piles, and related appurtenances thereto, and being in the vicinity of NAD83 geographic coordinates Latitude 38.07068943° North, Longitude 121.5744496° West.

Parcel 78 - ORFT_2

A parcel of land in the bed of the Old River in Contra Costa County, said parcel lying immediately beneath proposed instruments, cables, buoys, piles, and related appurtenances thereto, and being in the vicinity of NAD83 geographic coordinates Latitude 38.07265959° North, Longitude 121.5755926° West.

Parcel 79 - ORFT_3

A parcel of land in the bed of the Old River in San Joaquin County, said parcel lying immediately beneath proposed instruments, cables, buoys, piles, and related appurtenances thereto, and being in the vicinity of NAD83 geographic coordinates Latitude 38.06073662° North, Longitude 121.5807126° West.

Parcel 80 - ORFT_5

A parcel of land in the bed of the Old River in Contra Costa County, said parcel lying immediately beneath proposed instruments, cables, buoys, piles, and related appurtenances thereto, and being in the vicinity of NAD83 geographic coordinates Latitude 38.06277053° North, Longitude 121.5830442° West.

Parcel 81 - PP_1

A parcel of land in the bed of the San Joaquin River in San Joaquin County, said parcel lying immediately beneath proposed instruments, cables, buoys, piles, and related appurtenances thereto, and being in the vicinity of NAD83 geographic coordinates Latitude 38.06109878° North, Longitude 121.5599741° West.

Parcel 82 - PP_5

A parcel of land in the bed of the San Joaquin River in San Joaquin County, said parcel lying immediately beneath proposed instruments, cables, buoys, piles, and related appurtenances thereto, and being in the vicinity of NAD83 geographic coordinates Latitude 38.0613408° North, Longitude 121.5553497° West.

Parcel 83 - PP_6

A parcel of land in the bed of the San Joaquin River in San Joaquin County, said parcel lying immediately beneath proposed instruments, cables, buoys, piles, and

related appurtenances thereto, and being in the vicinity of NAD83 geographic coordinates Latitude 38.06320621° North, Longitude 121.5605505° West.

Parcel 84 - PP_7

A parcel of land in the bed of the San Joaquin River in San Joaquin County, said parcel lying immediately beneath proposed instruments, cables, buoys, piles, and related appurtenances thereto, and being in the vicinity of NAD83 geographic coordinates Latitude 38.06349679° North, Longitude 121.5544331° West.

Parcel 85 - MAC_1

A parcel of land in the bed of the San Joaquin River in San Joaquin County, said parcel lying immediately beneath proposed instruments, cables, buoys, piles, and related appurtenances thereto, and being in the vicinity of NAD83 geographic coordinates Latitude 38.01774549° North, Longitude 121.4646567° West.

Parcel 86 - MAC_2

A parcel of land in the bed of the San Joaquin River in San Joaquin County, said parcel lying immediately beneath proposed instruments, cables, buoys, piles, and related appurtenances thereto, and being in the vicinity of NAD83 geographic coordinates Latitude 38.01919006° North, Longitude 121.4621007° West.

Parcel 87 - MAC_3

A parcel of land in the bed of the San Joaquin River in San Joaquin County, said parcel lying immediately beneath proposed instruments, cables, buoys, piles, and related appurtenances thereto, and being in the vicinity of NAD83 geographic coordinates Latitude 38.02297921° North, Longitude 121.4670434° West.

Parcel 88 - MAC_4

A parcel of land in the bed of the San Joaquin River in San Joaquin County, said parcel lying immediately beneath proposed instruments, cables, buoys, piles, and related appurtenances thereto, and being in the vicinity of NAD83 geographic coordinates Latitude 38.02371991° North, Longitude 121.4641676° West.

Parcel 89 - GAM_1

A parcel of land in the bed of the Georgianna Slough in Sacramento County, said parcel lying immediately beneath proposed instruments, cables, buoys, piles, and related appurtenances thereto, and being in the vicinity of NAD83 geographic coordinates Latitude 38.13247984° North, Longitude 121.5898384° West.

Parcel 90 - GAM_3

A parcel of land in the bed of the Georgianna Slough in Sacramento County, said parcel lying immediately beneath proposed instruments, cables, buoys, piles, and related appurtenances thereto, and being in the vicinity of NAD83 geographic coordinates Latitude 38.1298796° North, Longitude 121.5856908° West.

Parcel 91 - SC_1

A parcel of land in the bed of the Sacramento River in Sacramento County, said parcel lying immediately beneath proposed instruments, cables, buoys, piles, and related appurtenances thereto, and being in the vicinity of NAD83 geographic coordinates Latitude 38.17237753° North, Longitude 121.6482058° West.

Parcel 92 - SC_2

A parcel of land in the bed of the Sacramento River in Sacramento County, said parcel lying immediately beneath proposed instruments, cables, buoys, piles, and related appurtenances thereto, and being in the vicinity of NAD83 geographic coordinates Latitude 38.17372262° North, Longitude 121.6478587° West.

Parcel 93 - SC_3

A parcel of land in the bed of the Sacramento River in Sacramento County, said parcel lying immediately beneath proposed instruments, cables, buoys, piles, and related appurtenances thereto, and being in the vicinity of NAD83 geographic coordinates Latitude 38.17296028° North, Longitude 121.6528597° West.

Parcel 94 - SC_4

A parcel of land in the bed of the Sacramento River in Sacramento County, said parcel lying immediately beneath proposed instruments, cables, buoys, piles, and related appurtenances thereto, and being in the vicinity of NAD83 geographic coordinates Latitude 38.17452134° North, Longitude 121.6517976° West.

Parcel 95 - STX_1

A parcel of land in the bed of the Steamboat Slough in Sacramento County, said parcel lying immediately beneath proposed instruments, cables, buoys, piles, and related appurtenances thereto, and being in the vicinity of NAD83 geographic coordinates Latitude 38.18825716° North, Longitude 121.6423440° West.

Parcel 96 - STX_2

A parcel of land in the bed of the Steamboat Slough in Solano County, said parcel lying immediately beneath proposed instruments, cables, buoys, piles, and

related appurtenances thereto, and being in the vicinity of NAD83 geographic coordinates Latitude 38.18893422° North, Longitude 121.6441778° West.

Parcel 97 - STX_3

A parcel of land in the bed of the Steamboat Slough in Sacramento County, said parcel lying immediately beneath proposed instruments, cables, buoys, piles, and related appurtenances thereto, and being in the vicinity of NAD83 geographic coordinates Latitude 38.18377464° North, Longitude 121.6499807° West.

Parcel 98 - STX_4

A parcel of land in the bed of the Steamboat Slough in Solano County, said parcel lying immediately beneath proposed instruments, cables, buoys, piles, and related appurtenances thereto, and being in the vicinity of NAD83 geographic coordinates Latitude 38.18500330° North, Longitude 121.6505263° West.

Parcel 99 - STBS_1

A parcel of land in the bed of the Steamboat Slough in Sacramento County, said parcel lying immediately beneath proposed instruments, cables, buoys, piles, and related appurtenances thereto, and being in the vicinity of NAD83 geographic coordinates Latitude 38.24688491° North, Longitude 121.2013049° West.

Parcel 100 - STBS _2

A parcel of land in the bed of the Steamboat Slough in Solano County, said parcel lying immediately beneath proposed instruments, cables, buoys, piles, and related appurtenances thereto, and being in the vicinity of NAD83 geographic coordinates Latitude 38.24686391° North, Longitude 121.6025025° West.

Parcel 101 - STBS _3

A parcel of land in the bed of the Steamboat Slough in Sacramento County, said parcel lying immediately beneath proposed instruments, cables, buoys, piles, and related appurtenances thereto, and being in the vicinity of NAD83 geographic coordinates Latitude 38.24343417° North, Longitude 121.6011527° West.

Parcel 102 - STBS _4

A parcel of land in the bed of the Steamboat Slough in Solano County, said parcel lying immediately beneath proposed instruments, cables, buoys, piles, and related appurtenances thereto, and being in the vicinity of NAD83 geographic coordinates Latitude 38.24357229° North, Longitude 121.6026816° West.

Parcel 103 - SFM

A parcel of land in the bed of the South Fork Mokelumne River in San Joaquin County, said parcel lying immediately beneath existing instruments, cables, buoys, piles, and related appurtenances thereto, and being in the vicinity of NAD83 geographic coordinates Latitude 38.225366° North, Longitude 121.491129° West.

Parcel 104 - NFM

A parcel of land in the bed of the North Fork Mokelumne River in Sacramento County, said parcel lying immediately beneath existing instruments, cables, buoys, piles, and related appurtenances thereto, and being in the vicinity of NAD83 geographic coordinates Latitude 38.220595° North, Longitude 121.507450° West.

Parcel 105 - GSS

A parcel of land in the bed of the Georgianna Slough in Sacramento County, said parcel lying immediately beneath existing instruments, cables, buoys, piles, and related appurtenances thereto, and being in the vicinity of NAD83 geographic coordinates Latitude 38.235385° North, Longitude 121.518138° West.

Parcel 106 - GEO_1

A parcel of land in the bed of the Georgianna Slough in Sacramento County, said parcel lying immediately beneath proposed instruments, cables, buoys, piles, and related appurtenances thereto, and being in the vicinity of NAD83 geographic coordinates Latitude 38.23354542° North, Longitude 121.5194673° West.

Parcel 107 - GEO_2

A parcel of land in the bed of the Georgianna Slough in Sacramento County, said parcel lying immediately beneath proposed instruments, cables, buoys, piles, and related appurtenances thereto, and being in the vicinity of NAD83 geographic coordinates Latitude 38.23085977° North, Longitude 121.5222476° West.

Parcel 108 - GES

A parcel of land in the bed of the Sacramento River in Sacramento County, said parcel lying immediately beneath existing instruments, cables, buoys, piles, and related appurtenances thereto, and being in the vicinity of NAD83 geographic coordinates Latitude 38.238861° North, Longitude 121.523740° West.

Parcel 109 - SBG_1

A parcel of land in the bed of the Sacramento River in Sacramento County, said parcel lying immediately beneath proposed instruments, cables, buoys, piles, and related appurtenances thereto, and being in the vicinity of NAD83 geographic coordinates Latitude 38.23790457° North, Longitude 121.5301511° West.

Parcel 110 - SBG_2

A parcel of land in the bed of the Sacramento River in Sacramento County, said parcel lying immediately beneath proposed instruments, cables, buoys, piles, and related appurtenances thereto, and being in the vicinity of NAD83 geographic coordinates Latitude 38.23849539° North, Longitude 121.5303916° West.

Parcel 111 - SBG_3

A parcel of land in the bed of the Sacramento River in Sacramento County, said parcel lying immediately beneath proposed instruments, cables, buoys, piles, and related appurtenances thereto, and being in the vicinity of NAD83 geographic coordinates Latitude 38.23826187° North, Longitude 121.5337303° West.

Parcel 112 - SBG_4

A parcel of land in the bed of the Sacramento River in Sacramento County, said parcel lying immediately beneath proposed instruments, cables, buoys, piles, and related appurtenances thereto, and being in the vicinity of NAD83 geographic coordinates Latitude 38.23881933° North, Longitude 121.5335115° West.

Parcel 113 - SDC

A parcel of land in the bed of the Sacramento River in Sacramento County, said parcel lying immediately beneath existing instruments, cables, buoys, piles, and related appurtenances thereto, and being in the vicinity of NAD83 geographic coordinates Latitude 38.252488° North, Longitude 121.511813° West.

Parcel 114 - MSX_1

A parcel of land in the bed of the Miner Slough in Solano County, said parcel lying immediately beneath proposed instruments, cables, buoys, piles, and related appurtenances thereto, and being in the vicinity of NAD83 geographic coordinates Latitude 38.23638308° North, Longitude 121.6654714° West.

Parcel 115 - MSX_3

A parcel of land in the bed of the Miner Slough in Solano County, said parcel lying immediately beneath proposed instruments, cables, buoys, piles, and

related appurtenances thereto, and being in the vicinity of NAD83 geographic coordinates Latitude 38.23367602° North, Longitude 121.6682099° West.

Parcel 116 - CAL_1

A parcel of land in the bed of the Cache Slough in Solano County, said parcel lying immediately beneath proposed instruments, cables, buoys, piles, and related appurtenances thereto, and being in the vicinity of NAD83 geographic coordinates Latitude 38.2364005° North, Longitude 121.680326° West.

Parcel 117 - CAL_3

A parcel of land in the bed of the Cache Slough in Solano County, said parcel lying immediately beneath proposed instruments, cables, buoys, piles, and related appurtenances thereto, and being in the vicinity of NAD83 geographic coordinates Latitude 38.23457313° North, Longitude 121.6829261° West.

Parcel 118 - CAL_4

A parcel of land in the bed of the Cache Slough in Solano County, said parcel lying immediately beneath proposed instruments, cables, buoys, piles, and related appurtenances thereto, and being in the vicinity of NAD83 geographic coordinates Latitude 38.23536733° North, Longitude 121.6778847° West.

Parcel 119 - CAL_6

A parcel of land in the bed of the Cache Slough in Solano County, said parcel lying immediately beneath proposed instruments, cables, buoys, piles, and related appurtenances thereto, and being in the vicinity of NAD83 geographic coordinates Latitude 38.23341178° North, Longitude 121.6791112° West.

Parcel 120 - ME_1

A parcel of land in the bed of the Miner Slough in Solano County, said parcel lying immediately beneath proposed instruments, cables, buoys, piles, and related appurtenances thereto, and being in the vicinity of NAD83 geographic coordinates Latitude 38.29026637° North, Longitude 121.6163779° West.

Parcel 121 - ME_2

A parcel of land in the bed of the Miner Slough in Solano County, said parcel lying immediately beneath proposed instruments, cables, buoys, piles, and related appurtenances thereto, and being in the vicinity of NAD83 geographic coordinates Latitude 38.2909251° North, Longitude 121.6203873° West.

Parcel 122 - SBM_1

A parcel of land in the bed of the Sutter Slough in Sacramento County, said parcel lying immediately beneath proposed instruments, cables, buoys, piles, and related appurtenances thereto, and being in the vicinity of NAD83 geographic coordinates Latitude 38.26998947° North, Longitude 121.6038685° West.

Parcel 123 - BM_3

A parcel of land in the bed of the Sutter Slough in Sacramento County, said parcel lying immediately beneath proposed instruments, cables, buoys, piles, and related appurtenances thereto, and being in the vicinity of NAD83 geographic coordinates Latitude 38.26803693° North, Longitude 121.6030552° West.

Parcel 124 - STE _1

A parcel of land in the bed of the Steamboat Slough in Sacramento County, said parcel lying immediately beneath proposed instruments, cables, buoys, piles, and related appurtenances thereto, and being in the vicinity of NAD83 geographic coordinates Latitude 38.28497431° North, Longitude 121.5865118° West.

Parcel 125 - STE _3

A parcel of land in the bed of the Steamboat Slough in Sacramento County, said parcel lying immediately beneath proposed instruments, cables, buoys, piles, and related appurtenances thereto, and being in the vicinity of NAD83 geographic coordinates Latitude 38.28029308° North, Longitude 121.5887997° West.

Parcel 126 - SBS _1

A parcel of land in the bed of the Sacramento River in Sacramento County, said parcel lying immediately beneath proposed instruments, cables, buoys, piles, and related appurtenances thereto, and being in the vicinity of NAD83 geographic coordinates Latitude 38.28551207° North, Longitude 121.5538382° West.

Parcel 127 - SBS _2

A parcel of land in the bed of the Sacramento River in Sacramento County, said parcel lying immediately beneath proposed instruments, cables, buoys, piles, and related appurtenances thereto, and being in the vicinity of NAD83 geographic coordinates Latitude 38.28500879° North, Longitude 121.5546651° West.

Parcel 128 - SBS _3

A parcel of land in the bed of the Sacramento River in Sacramento County, said parcel lying immediately beneath proposed instruments, cables, buoys, piles, and

related appurtenances thereto, and being in the vicinity of NAD83 geographic coordinates Latitude 38.28375854° North, Longitude 121.551456° West.

Parcel 129 - SBS _4

A parcel of land in the bed of the Sacramento River in Sacramento County, said parcel lying immediately beneath proposed instruments, cables, buoys, piles, and related appurtenances thereto, and being in the vicinity of NAD83 geographic coordinates Latitude 38.28315942° North, Longitude 121.5521156° West.

Parcel 130 - STM

A parcel of land in the bed of the Steamboat Slough in Sacramento County, said parcel lying immediately beneath existing instruments, cables, buoys, piles, and related appurtenances thereto, and being in the vicinity of NAD83 geographic coordinates Latitude 38.304600° North, Longitude 121.575584° West.

Parcel 131 - SSS

A parcel of land in the bed of the Sutter Slough in Sacramento County, said parcel lying immediately beneath existing instruments, cables, buoys, piles, and related appurtenances thereto, and being in the vicinity of NAD83 geographic coordinates Latitude 38.329026° North, Longitude 121.578128° West.

Parcel 132 - SSE_1

A parcel of land in the bed of the Sutter Slough in Sacramento County, said parcel lying immediately beneath proposed instruments, cables, buoys, piles, and related appurtenances thereto, and being in the vicinity of NAD83 geographic coordinates Latitude 38.33154388° North, Longitude 121.5819745° West.

Parcel 133 - SSE_3

A parcel of land in the bed of the Sutter Slough in Sacramento County, said parcel lying immediately beneath proposed instruments, cables, buoys, piles, and related appurtenances thereto, and being in the vicinity of NAD83 geographic coordinates Latitude 38.33067515° North, Longitude 121.5849322° West.

Parcel 134 - SF_1

A parcel of land in the bed of the Sacramento River in Sacramento County, said parcel lying immediately beneath existing instruments, cables, buoys, piles, and related appurtenances thereto, and being in the vicinity of NAD83 geographic coordinates Latitude 38.45514037° North, Longitude 121.501105° West.

Parcel 135 - SF_2

A parcel of land in the bed of the Sacramento River in Sacramento County, said parcel lying immediately beneath existing instruments, cables, buoys, piles, and related appurtenances thereto, and being in the vicinity of NAD83 geographic coordinates Latitude 38.45489227° North, Longitude 121.5027143° West.

Parcel 136 - SF_3

A parcel of land in the bed of the Sacramento River in Sacramento County, said parcel lying immediately beneath existing instruments, cables, buoys, piles, and related appurtenances thereto, and being in the vicinity of NAD83 geographic coordinates Latitude 38.451398097° North, Longitude 121.500517° West.

Parcel 137 - SF_4

A parcel of land in the bed of the Sacramento River in Sacramento County, said parcel lying immediately beneath existing instruments, cables, buoys, piles, and related appurtenances thereto, and being in the vicinity of NAD83 geographic coordinates Latitude 38.45134717° North, Longitude 121.5022119° West.

Parcel 138 - SRD_1

A parcel of land in the bed of the Sacramento River in Sacramento County, said parcel lying immediately beneath proposed instruments, cables, buoys, piles, and related appurtenances thereto, and being in the vicinity of NAD83 geographic coordinates Latitude 38.5792715° North, Longitude 121.5080959° West.

Parcel 139 - SRD_2

A parcel of land in the bed of the Sacramento River in Sacramento County, said parcel lying immediately beneath proposed instruments, cables, buoys, piles, and related appurtenances thereto, and being in the vicinity of NAD83 geographic coordinates Latitude 38.57959798° North, Longitude 121.5096432° West.

Parcel 140 - SBF_1

A parcel of land in the bed of the Sacramento River in Sacramento County, said parcel lying immediately beneath proposed instruments, cables, buoys, piles, and related appurtenances thereto, and being in the vicinity of NAD83 geographic coordinates Latitude 38.78108066° North, Longitude 121.6067421° West.

Parcel 141 - SBF_2

A parcel of land in the bed of the Sacramento River in Sacramento County, said parcel lying immediately beneath proposed instruments, cables, buoys, piles, and related appurtenances thereto, and being in the vicinity of NAD83 geographic coordinates Latitude 38.78006855° North, Longitude 121.6074493° West.

Parcel 142 - YBF

A parcel of land in the bed of the Sacramento River in Sacramento County, said parcel lying immediately beneath proposed instruments, cables, buoys, piles, and related appurtenances thereto, and being in the vicinity of NAD83 geographic coordinates Latitude 38.7607171° North, Longitude 121.6595503° West.

Parcel 143 - CM 16

A parcel of land in the bed of the Suisun Bay in Solano County, said parcel lying immediately beneath existing instruments, cables, buoys, piles, and related appurtenances thereto, and being in the vicinity of NAD83 geographic coordinates Latitude 38°03'55.9" North, Longitude 122°02'36.7" West.

Parcel 144 - CM 24A

A parcel of land in the bed of the Suisun Bay in Solano County, said parcel lying immediately beneath existing instruments, cables, buoys, piles, and related appurtenances thereto, and being in the vicinity of NAD83 geographic coordinates Latitude 38°03'18.6" North, Longitude 121°57'15.6" West.

Parcel 145 - CM 31

A parcel of land in the bed of the Suisun Bay in Solano County, said parcel lying immediately beneath existing instruments, cables, buoys, piles, and related appurtenances thereto, and being in the vicinity of NAD83 geographic coordinates Latitude 38°02'58.1" North, Longitude 121°53'15.4" West.

Parcel 146 - CM 5

A parcel of land in the bed of the Sacramento River in Sacramento County, said parcel lying immediately existing beneath instruments, cables, buoys, piles, and related appurtenances thereto, and being in the vicinity of NAD83 geographic coordinates Latitude 38°03'56.8" North, Longitude 121°50'08.9" West.

Parcel 147 - CM 10

A parcel of land in the bed of the Sacramento River in Solano County, said parcel lying immediately beneath existing instruments, cables, buoys, piles, and related

appurtenances thereto, and being in the vicinity of NAD83 geographic coordinates Latitude 38°03'35.4" North, Longitude 121°47'59.6" West.

Parcel 148 - CM 13

A parcel of land in the bed of the Sacramento River in Solano County, said parcel lying immediately beneath existing instruments, cables, buoys, piles, and related appurtenances thereto, and being in the vicinity of NAD83 geographic coordinates Latitude 38°04'40.7" North, Longitude 121°46'02.0" West.

Parcel 149 - DEC

A parcel of land in the bed of the Sacramento River in Sacramento County, said parcel lying immediately beneath existing instruments, cables, buoys, piles, and related appurtenances thereto, and being in the vicinity of NAD83 geographic coordinates Latitude 38°05'39.1" North, Longitude 121°44'11.7" West.

Parcel 150 - CM 23

A parcel of land in the bed of the San Joaquin River in Contra Costa County, said parcel lying immediately existing beneath instruments, cables, buoys, piles, and related appurtenances thereto, and being in the vicinity of NAD83 geographic coordinates Latitude 38°02'42.3" North, Longitude 121°41'48.0" West.

Parcel 151 - JPT

A parcel of land in the bed of the San Joaquin River in Contra Costa County, said parcel lying immediately beneath existing instruments, cables, buoys, piles, and related appurtenances thereto, and being in the vicinity of NAD83 geographic coordinates Latitude 38°03'09.3" North, Longitude 121°41'18.3" West.

Parcel 152 - FAL

A parcel of land in the bed of the False River in Contra Costa County, said parcel lying immediately beneath existing instruments, cables, buoys, piles, and related appurtenances thereto, and being in the vicinity of NAD83 geographic coordinates Latitude 38°03'19.7" North, Longitude 121°40'01.7" West.

Parcel 153 - HOL

A parcel of land in the bed of the Holland Cut in Contra Costa County, said parcel lying immediately beneath existing instruments, cables, buoys, piles, and related appurtenances thereto, and being in the vicinity of NAD83 geographic coordinates Latitude 38°00'57.0" North, Longitude 121°34'55.6" West.

Parcel 154 - PPT

A parcel of land in the bed of the San Joaquin River in San Joaquin County, said parcel lying immediately beneath existing instruments, cables, buoys, piles, and related appurtenances thereto, and being in the vicinity of NAD83 geographic coordinates Latitude 38°03'30.7" North, Longitude 121°33'24.6" West.

Parcel 155 - ORS

A parcel of land in the bed of the Old River in Contra Costa County, said parcel lying immediately beneath existing instruments, cables, buoys, piles, and related appurtenances thereto, and being in the vicinity of NAD83 geographic coordinates Latitude 38°04'16.5" North, Longitude 121°34'42.1" West.

Parcel 156 - LPS

A parcel of land in the bed of the Little Potato Slough in San Joaquin County, said parcel lying immediately beneath existing instruments, cables, buoys, piles, and related appurtenances thereto, and being in the vicinity of NAD83 geographic coordinates Latitude 38°05'46.0" North, Longitude 121°29'45.6" West.

Parcel 157 - RIO

A parcel of land in the bed of the Sacramento River in Solano County, said parcel lying immediately beneath existing instruments, cables, buoys, piles, and related appurtenances thereto, and being in the vicinity of NAD83 geographic coordinates Latitude 38°08'56.6" North, Longitude 121°41'20.3" West.

Parcel 158 - CCH

A parcel of land in the bed of the Cache Slough in Solano County, said parcel lying immediately beneath existing instruments, cables, buoys, piles, and related appurtenances thereto, and being in the vicinity of NAD83 geographic coordinates Latitude 38°11'38.4" North, Longitude 121°39'29.2" West.

Parcel 159 - LIB

A parcel of land in the bed of the Cache Slough in Solano County, said parcel lying immediately beneath existing instruments, cables, buoys, piles, and related appurtenances thereto, and being in the vicinity of NAD83 geographic coordinates Latitude 38°14'34.9" North, Longitude 121°41'03.3" West.

Parcel 160 - MIN

A parcel of land in the bed of the Miner Slough in Solano County, said parcel lying immediately beneath existing instruments, cables, buoys, piles, and related appurtenances thereto, and being in the vicinity of NAD83 geographic coordinates Latitude 38°17'29.7" North, Longitude 121°37'51.8" West.

Parcel 161 - Miller Park Upstream

A parcel of land in the bed of the Sacramento River in Sacramento County, said parcel lying immediately beneath existing instruments, cables, buoys, piles, and related appurtenances thereto, and being in the vicinity of NAD83 geographic coordinates Latitude 38°34'02.3" North, Longitude 121°31'08.8" West.

Parcel 162 - Miller Park Downstream

A parcel of land in the bed of the Sacramento River in Sacramento County, said parcel lying immediately beneath existing instruments, cables, buoys, piles, and related appurtenances thereto, and being in the vicinity of NAD83 geographic coordinates Latitude 38°34'01.8" North, Longitude 121°31'09.2" West.

Parcel 163 - Sacramento River 2-Pile Dolphin

A parcel of land in the bed of the Sacramento River in Sacramento County, said parcel lying immediately beneath existing two-pile dolphin and related appurtenances thereto, and being in the vicinity of NAD83 geographic coordinates Latitude 38°35'18.72" North, Longitude 121°30'18.96" West.

END OF DESCRIPTION

This description is based upon NAD83 geographic coordinate locations of existing and proposed water monitoring stations provided by the U.S. Geological Survey.

This description is based on Applicant provided geographic coordinates found in the Application for Lease of State Lands for instruments, cables, buoys, piles, and related, together with any and all appurtenances pertaining thereto, to be built at a later date within the Lease time frame. This description is to be updated once final as-built plans, or coordinates are submitted.

Prepared 03/07/2024 by the California State Lands Commission Boundary Unit.



NO SCALE

WATER MONITORING STATIONS

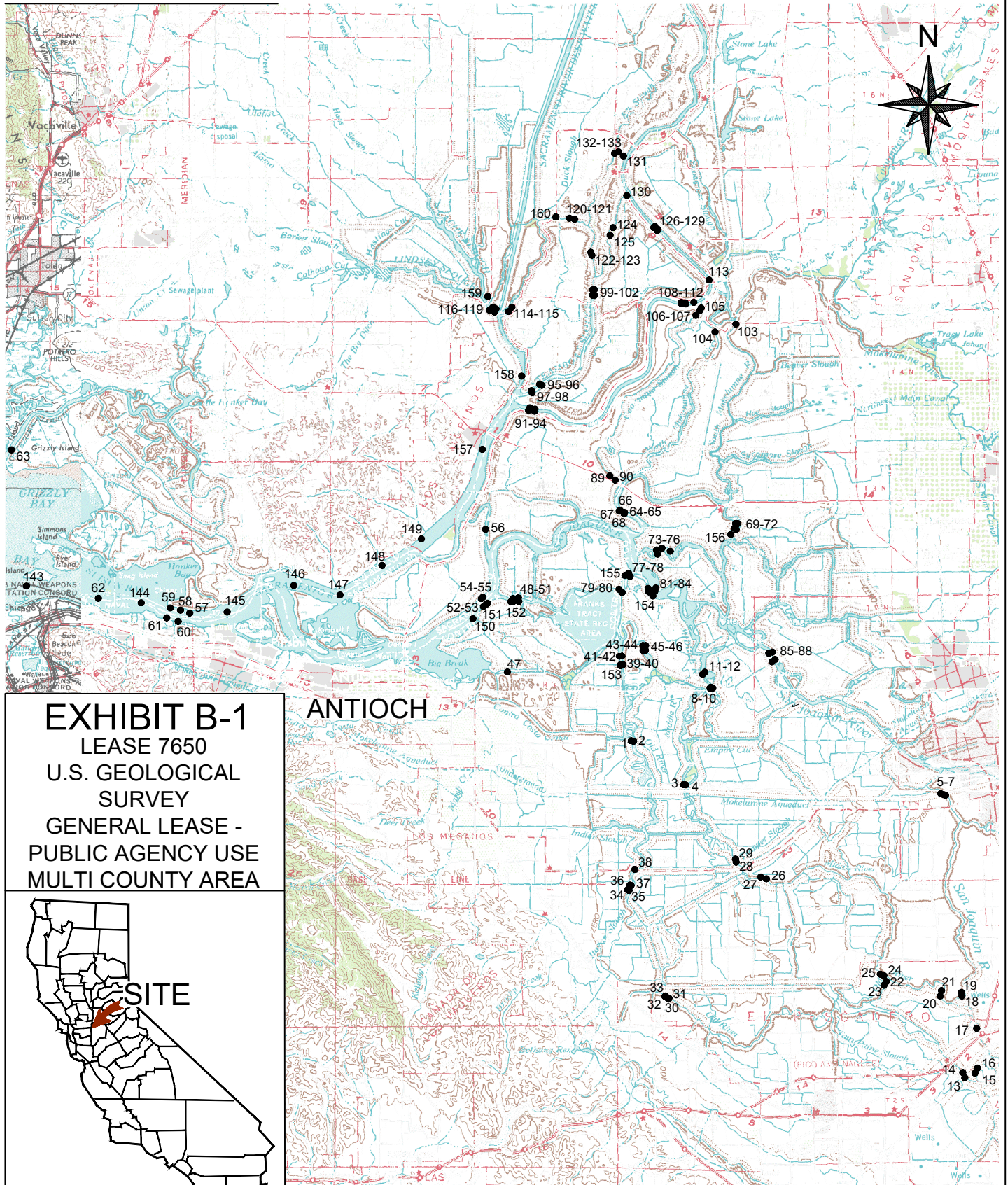


EXHIBIT B-1
 LEASE 7650
 U.S. GEOLOGICAL
 SURVEY
 GENERAL LEASE -
 PUBLIC AGENCY USE
 MULTI COUNTY AREA



TS 03/07/2024

MAP SOURCE: USGS QUAD

THIS EXHIBIT IS SOLELY FOR PURPOSES OF GENERALLY DEFINING THE LEASE PREMISES, IS BASED ON UNVERIFIED INFORMATION PROVIDED BY THE LESSEE OR OTHER PARTIES AND IS NOT INTENDED TO BE, NOR SHALL IT BE CONSTRUED AS, A WAIVER OR LIMITATION OF ANY STATE INTEREST IN THE SUBJECT OR ANY OTHER PROPERTY.

NO SCALE

WATER MONITORING STATIONS

EXHIBIT B-2

LEASE 7650

U.S. GEOLOGICAL SURVEY

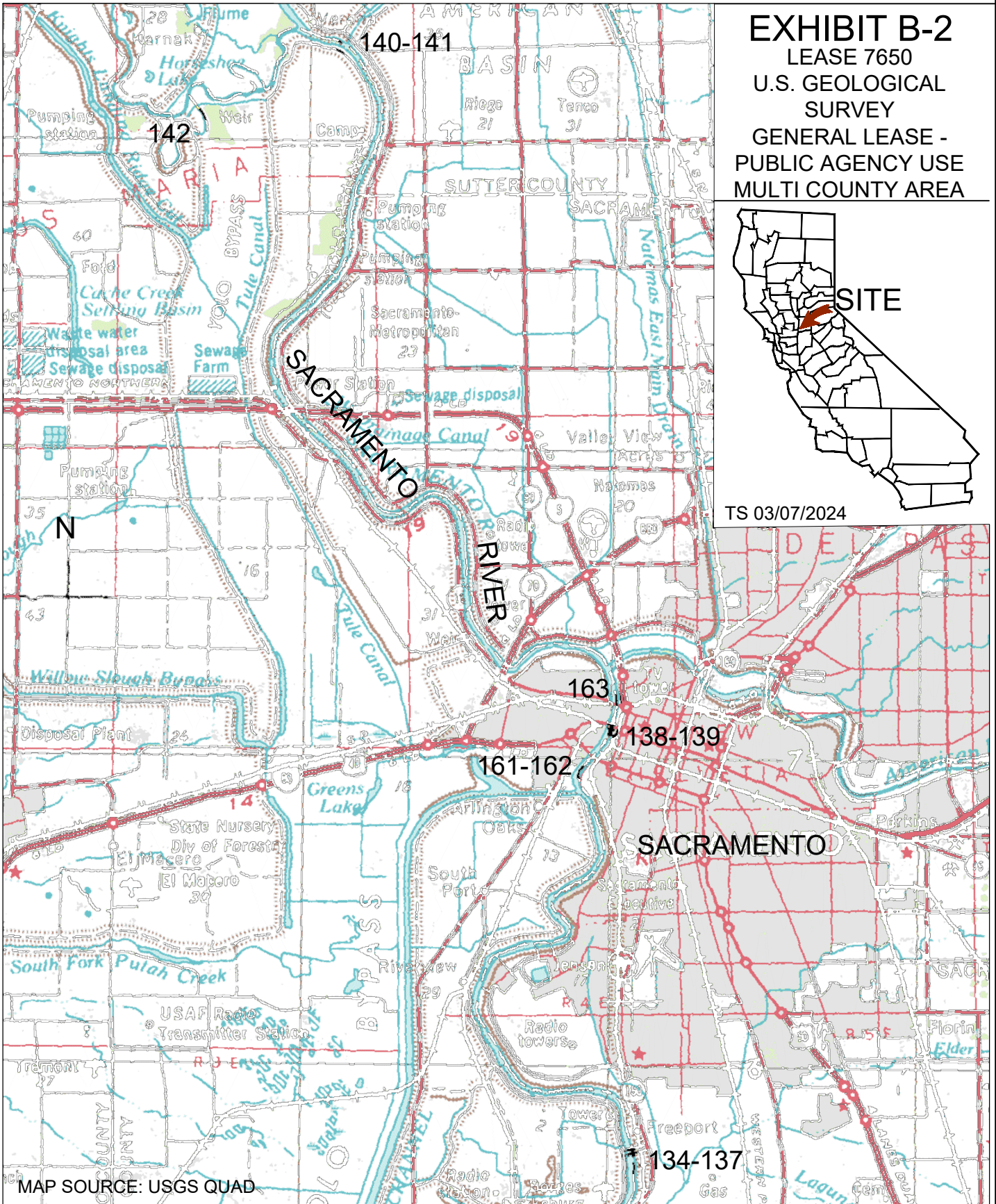
GENERAL LEASE -

PUBLIC AGENCY USE

MULTI COUNTY AREA



TS 03/07/2024



MAP SOURCE: USGS QUAD

THIS EXHIBIT IS SOLELY FOR PURPOSES OF GENERALLY DEFINING THE LEASE PREMISES, IS BASED ON UNVERIFIED INFORMATION PROVIDED BY THE LESSEE OR OTHER PARTIES AND IS NOT INTENDED TO BE, NOR SHALL IT BE CONSTRUED AS, A WAIVER OR LIMITATION OF ANY STATE INTEREST IN THE SUBJECT OR ANY OTHER PROPERTY.